

New sealant chosen for Sandton landmark

DOW CORNING structural glazing sealant, supplied by a.b.e. Construction Chemicals, has been specified for the façades of the new 15 Alice Lane Towers in Sandton.

Doug Richards, Technical Sales Consultant for a.b.e., says Dow Corning 993 structural silicone and Dow Corning 813C silicone sealant will be applied to about 13 000m² of the façades of the twin tower high-rise building by sub-contractors, Grinaker-LTA Facades, the glass and aluminium curtain walling division of the project's main contractors, Grinaker-LTA Building.

Dow Corning 993 is a two-component neutral curing silicone sealant which can resist

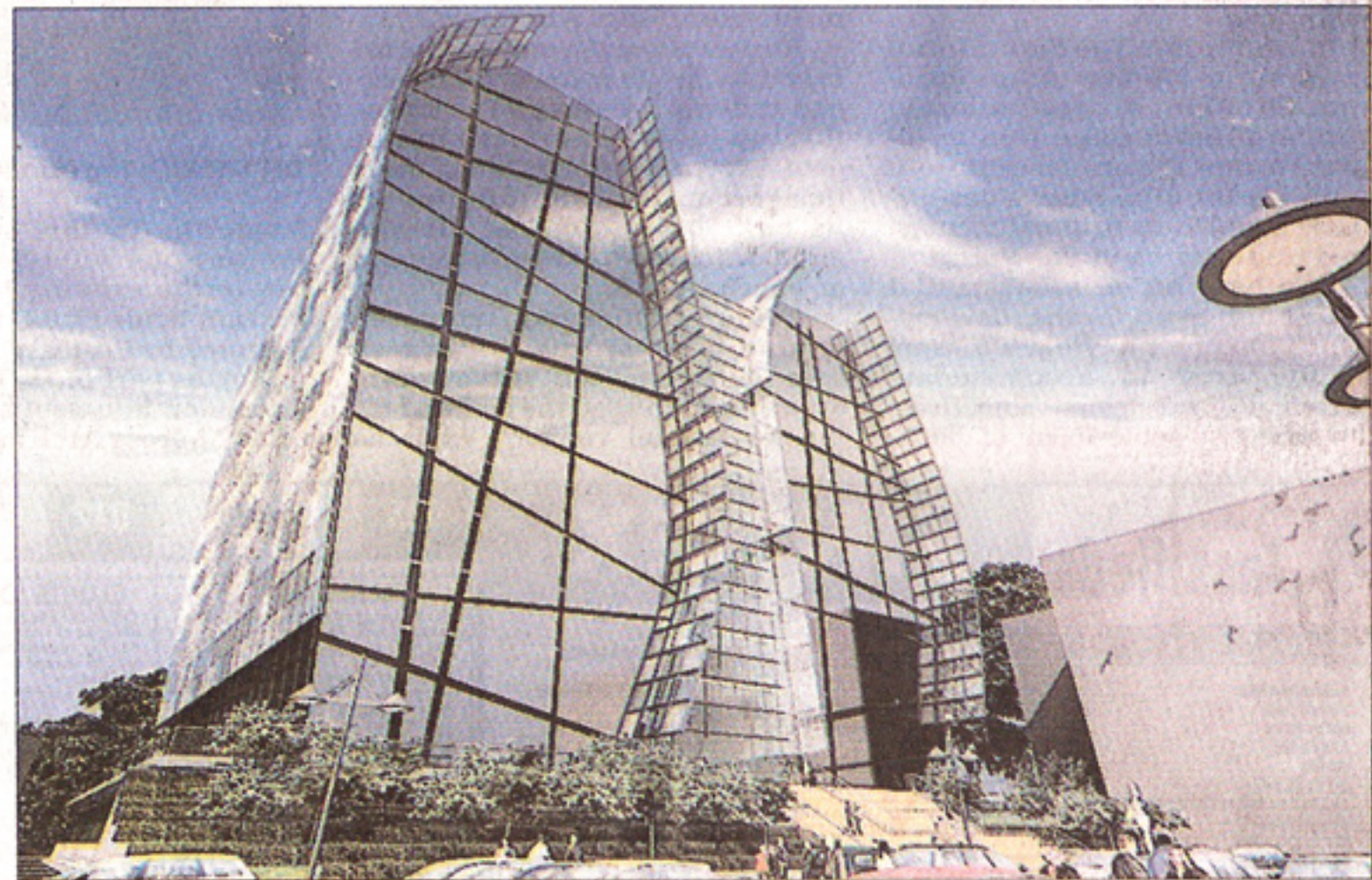
exceptionally high stress levels caused by wind, thermal dilatation and the constant weight of the glass units. "The sealant features superb structural capabilities together with enhanced adhesion to substrates such as approved coated, enamelled and reflective glass; anodised and polyester-coated aluminium and stainless steel," Richard states.

"Dow Corning 813C is a one-part, neutral curing, low-modulus silicone sealant particularly suitable for weather seals, expansion joints and perimetral building joints. It offers durable adhesion to porous and non-porous surfaces such as concrete, masonry, brick, PVC-U, wood, and glazed surfaces. It resists

ozone and UV radiation as well as extreme temperatures, and can cope with joint movement of up to 50% of neutral joint width," Richards adds.

Grinaker-LTA Facades has qualified for membership of the exclusive Dow Corning International Quality Bond programme. Members are trained and audited by Dow Corning to ensure they comply with the company's stringent application procedure and a.b.e. Construction Chemicals ensures all these quality procedures are met. Quality Bond members qualify for a warranty of €250 per m².

● For more information contact Elrene Smuts on 011 306 9000 or visit www.abe.co.za



IN PROGRESS: An artist's impression of a new striking Sandton skyscraper, 15 Alice Lane Towers, for which a.b.e. Construction Chemicals is supplying the structural glazing products.