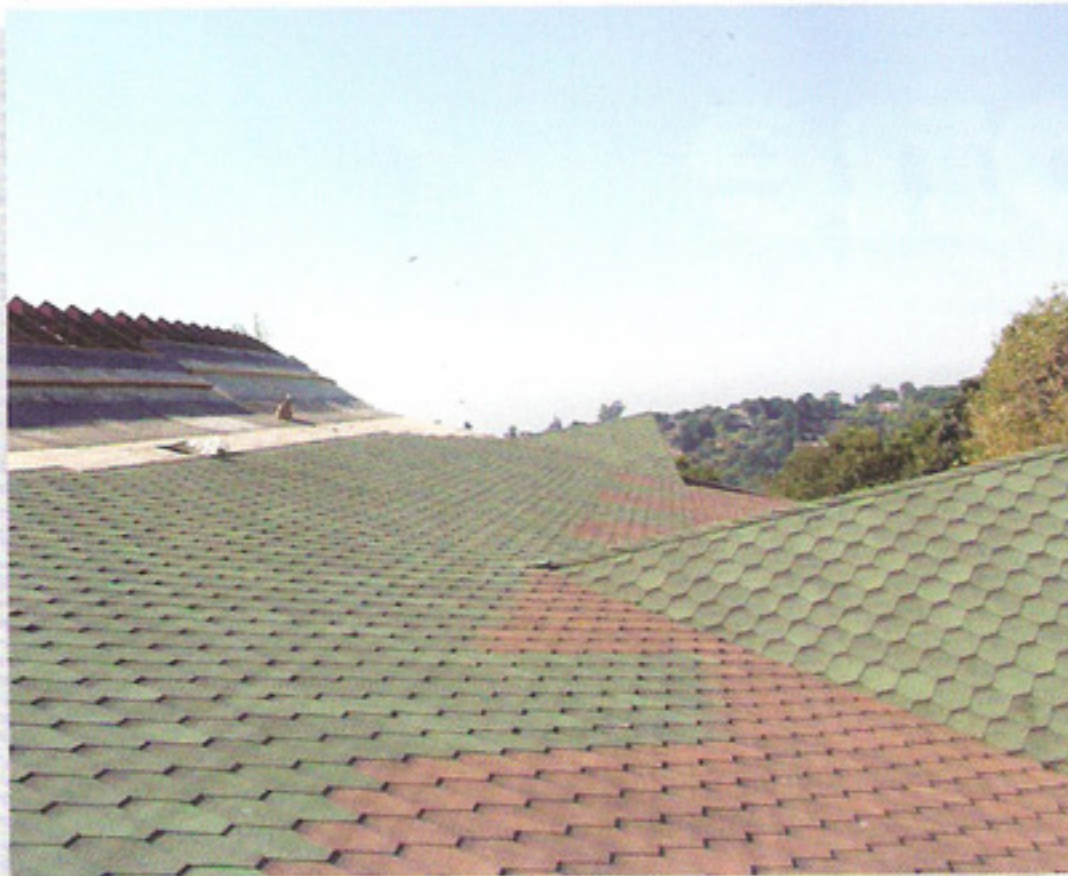


Winter is the time to waterproof roofs



The current dry winter is the time for waterproofing of roofs, believes a.b.e. Construction Chemicals.

Now is the time to tackle essential roof waterproofing tasks, before the summer rains start, believes a.b.e. Construction Chemicals, manufacturers of a wide range of waterproofing systems.

Elrene Smuts, Brand Coordinator for a.b.e. Construction Chemicals, says super laycryl and bituseal plastic are two roof waterproofing products whose performances have been endorsed by the passage of time.

SUPER LAYCRYL

Super laycryl has been successfully produced for the South African market for 70 years, and is a renowned professional liquid waterproofing compound. Available in red, grey, charcoal, burgundy, white, green and terracotta, it is ideal for waterproofing most non-trafficable roofing areas including flashings, parapet walling, and flat roofs. It can also be used for the sealing of joints, overlaps and roofing screws on corrugated roofs. Super laycryl is available in one-, five-, and 20-litre containers from local hardware stores.

BITUSEAL PLASTIC

Bituseal plastic is a general-purpose bitumen mastic for roof waterproofing. Also easy to apply, it is a heavy-duty sealer and repair compound that can be used to seal most roofing defects, sheeting overlaps, valleys, gutters, downpipes and enlarged screw holes. It has also been widely used to repair roof cracks, flashings, cracked roof tiles and to patch repair tanks. Bituseal plastic is available in black, in containers of 500ml, one, and five litres. It is recommended that a coating of silvakote, a.b.e.'s bitumen-based aluminium paint, be applied over the bituseal plastic three to four weeks afterwards to provide additional UV protection. ♀

a.b.e. Construction Chemicals

Tel: 011 306 9000

Website: www.abe.co.za