

SA TRUSTS a.b.e.'s VERSATILE RANGE OF SEALANTS

a.b.e. Construction Chemicals supplies a wide range of sealants, suitable for a variety of applications: from the glass façades of towering skyscrapers, to huge expanses of concrete paving, to highways or flooring projects.

a.b.e.'s popular Dow Corning range of sealants, imported from Belgium, has been specified for multi-million rand structural glazing projects such as the ICC in Durban, the Civitas building in Pretoria, the Arabella Sheraton Hotel in Cape Town, Vodacom head office in Midrand, and many other prestige curtain-walled structures.

Dow Corning also produces sealants for expansion joints on highways, airport aprons and bridges. Such sealants have, for example, been used on the M1 North in Johannesburg and Gautrain viaducts. Dow Corning's self-levelling silicone joint sealants can be used in conjunction with a.b.e.'s renowned flooring systems, and have also successfully been applied at the Sir Seretse Khama Airport runway in Botswana.

In addition to the Dow Corning range, a.b.e. also supplies a complete range of organic sealants such as polyurethanes, polysulphides, bitumen and acrylic.

QUALITY OF STRUCTURAL SEALANTS CAN MAKE - OR BREAK - GLAZING INSTALLATIONS

Not all silicone sealants are suitable for the "high performance" application of structural glazing, cautions Doug Richards, Technical Consultant for a.b.e. Construction Chemicals. "Only sealants developed and tested specifically for structural glazing should be used for this critical application," he says.

a.b.e. Construction Chemicals is the sole South African technical distributor for the respected Dow Corning range of structural glazing sealant (SG), insulating glass (IG), instant glaze (hot melt) and road seals.

Dow Corning sealants have been widely specified for various multi-million rand glazing projects in southern Africa and are extensively used globally for high-rise curtain walled structures, sports stadia as well as roads.

"All Dow Corning structural glazing sealants have been granted a European Technical Approval (ETA) through independent testing to European Technical Approval Guidelines (ETAG002). The sealants conform to European health, safety and environmental protection legislation," Richards stated.

Insulating glass (IG) is also used in silicone structural glazing. The performance of insulating glass in structural glazing applications is critical due to the load, stresses and extreme environmental factors impacting the façade. For these requirements to be fulfilled, both the construction of IG units - and the manufacturing of the individual components - must meet very high standards of quality.

Richards adds: "Dow Corning Instant Glaze window assembly is a patented, neutral-cure reactive hot-melt silicone that is ideal for automated back-bedding applications. When used with standard hot-melt dispensing equipment, and automated glazing tables, Instant Glaze becomes part of a total productivity solution that enables the user to produce windows and patio doors fast and economically." Dow Corning's silicone Road Seals have been extensively specified and applied on major road refurbishment contracts throughout the country.

Glass sealing or glass ceiling?

When you reach the ceiling with glass bonding and sealing solutions, we can offer you a new perspective.

With outstanding design versatility, our silicone technology provides a complete and fully integrated range of products for use in a comprehensive range of sealing applications.

These silicone adhesives and sealants open the way for creative design possibilities for structural glazing and façade construction, insulated glass, weather sealing or road sealing.

Together with our expertise we can help you create that perfect seal every time.

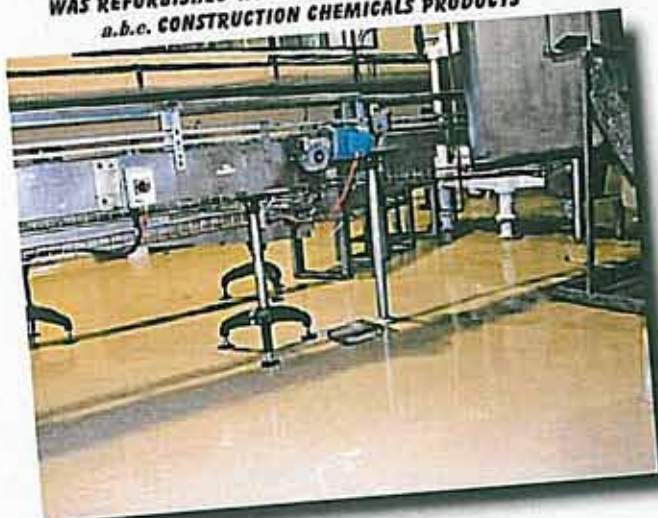


www.abe.co.za

Durban • Johannesburg • Cape Town • Port Elizabeth • East London • Bloemfontein • George

a.b.e. Construction Chemicals Limited

PART OF THE NESTLÉ FACTORY FLOOR IN MOSSEL BAY THAT WAS REFURBISHED WITH A COMBINATION OF DIVERSE a.b.e. CONSTRUCTION CHEMICALS PRODUCTS



a.b.e. SEALANT CAN COPE WITH FLOORS OR CURTAINWALLS

A versatile sealant and specialist flooring product provided by a.b.e. Construction Chemicals were used in tandem for the refurbishment of floors in a section of the Nestlé plant in Mossel Bay.

Johnie Emmerich, Technical Sales Consultant for a.b.e.'s Southern Cape branch, says about 150 square metres of Nestlé's condensed milk canning room floor were initially degreased and then coated with a 1,5mm thick application of a.b.e.'s abecote 400 Hi build in "Light Stone" colour, one of a wide variety of colours available in the abecote 400 Hi build flooring range. The floor joints were then re-cut and sealed with a.b.e.'s Dow Corning 813 sealant," Emmerich states.

"Dow Corning 813 is a single component neutral curing, low modulus silicone sealant that provides outstanding adhesion to both porous and non-porous substrates including concrete, stone masonry, brick, aluminium, UPVC, wood, glass, and glazed surfaces.

"In addition to serving as a weather sealant between aluminium, UPVC, and wooden door or window frames - and for weather-sealing curtain walling, building facades, and pre-fab concrete elements - Dow Corning 813 sealant can also be used to seal and bond high movement (plus 50% and minus 50%) expansion joints in concrete floors.

"Dow Corning 813 cures fast, resists ozone and UV radiation, as well as the effects of extreme temperatures. It is available in a range of colours," he adds. The canning room floor refurbishment was carried out by the Nestlé maintenance department with advisory input from a.b.e. Construction Chemicals' George branch.

DOW CORNING STRUCTURAL GLAZING FOR 15 ALICE LANE TOWERS

Dow Corning structural glazing sealant, supplied by a.b.e. Construction Chemicals has been specified for the façades of the new 15 Alice Lane Towers in Sandton.

Doug Richards, Technical Sales Consultant for a.b.e., says Dow Corning 993 structural silicone and Dow Corning 813C silicone sealant will be applied to about 13 000 square metres of the façades of the twin tower high-rise building by sub-contractors, Grinaker-LTA Facades, the glass and aluminium curtain walling division of the project's main contractors, Grinaker-LTA Building.

Richards says Dow Corning 993 is a two-component neutral curing silicone sealant which can resist exceptionally high stress levels caused by wind, thermal dilatation and the constant weight of the glass units. "The sealant features superb structural capabilities together with enhanced adhesion to substrates such as approved coated, enamelled and reflective glass; anodised and polyester-coated aluminium and stainless steel," he states.

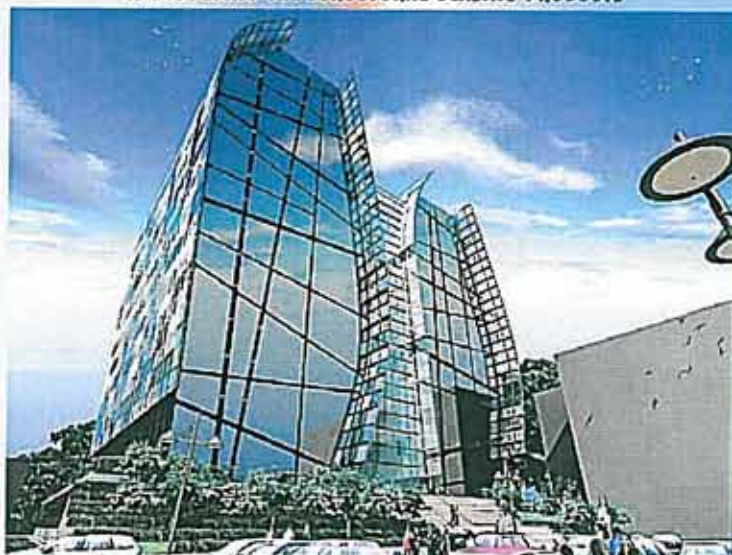
"Dow Corning 813C is a one-part, neutral curing, low-modulus silicone sealant particularly suitable for weather seals, expansion joints and perimetral building joints. It offers durable adhesion to porous and non-porous surfaces such as concrete, masonry, brick, PVC-U, wood, and glazed surfaces. It resists ozone and UV radiation as well as extreme temperatures, and can cope with joint movement of up to 50% of neutral joint width," Richards adds.

Grinaker-LTA Facades has qualified for membership of the relatively new and exclusive Dow Corning International Quality Bond programme. Quality Bond members are trained and audited by Dow Corning to ensure that they comply with the company's stringent application procedure and a.b.e. Construction Chemicals ensures that all these quality procedures are met. Quality Bond members qualify for a Dow Corning warranty of 250 Euros per square metre, which would cover all costs related to the replacement of faulty sealant. This provides architects and engineers with the assurance that their quality and expertise specifications will be met.

Grinaker-LTA Facades GM, Colin Gardner, has stated in media reports that the curtain wall on 15 Alice Lane Towers will be a "testing undertaking" with challenges such as carefully negotiating the vertically-curved curtain wall that protrudes 5m past the outside of the structure, and the extension of the curtain wall above roof level. The main glass façade consists of a variety of patterned glass elements.

a.b.e. Construction Chemicals is the technical distributor of Dow Corning construction, structural glazing, insulated glass and road sealants in South Africa.

AN ARTIST'S IMPRESSION OF A NEW STRIKING SANDTON SKYSCRAPER, 15 ALICE LANE TOWERS, FOR WHICH a.b.e. CONSTRUCTION CHEMICALS IS SUPPLYING THE STRUCTURAL GLAZING PRODUCTS



Contact Elrene Smuts, Tel: 011-306-9000, www.abe.co.za