

Mastic flooring over timber

The abeco heavy-duty mastic flooring system supplied by a.b.e. Construction Chemicals was specified in an unusual application recently, for the refurbishment of timber floors at the Sundays River Citrus Company in Addo, Eastern Cape.

Mark le Grange, technical sales consultant for a.b.e. in Port Elizabeth, says this application – over an 1 800 m² area of old timber floors – shows the versatility of abeco mastic.

a.b.e.'s approved applicator, Aquilla Construction, prepared the wooden floors with a primer consisting of diluted a.b.e Flintkote 3, a bituminous binder. A tack coat of Flintkote 3 was then applied, prior to a 12 mm coating of abeco mastic.

Le Grange reports that a.b.e. is currently receiving an increasing number of enquiries about the use of abeco for similar projects. The product was also recently

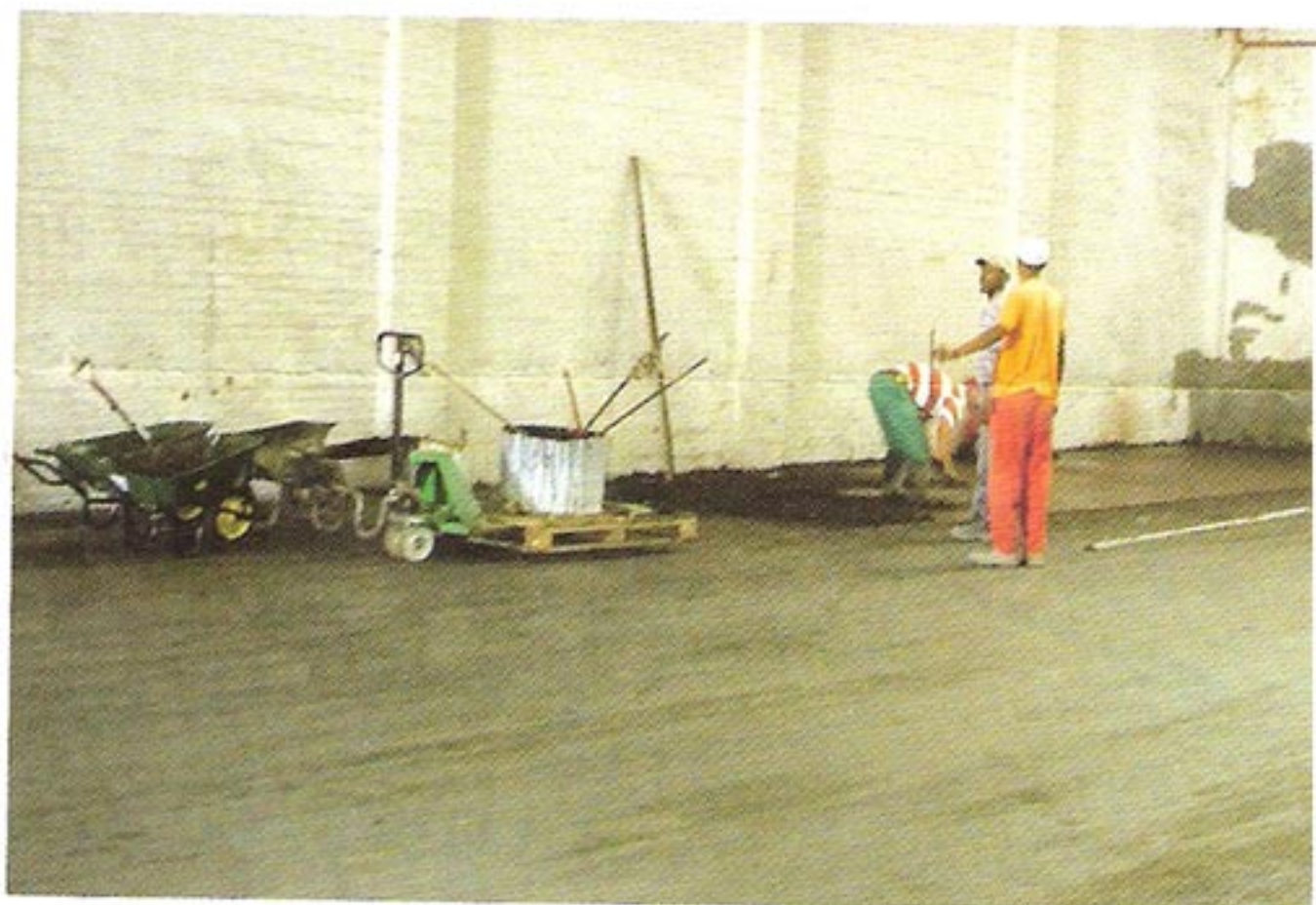
applied over timber floors at a backpacker's lodge in Coffee Bay.

“abeco mastic can be used to refurbish timber floors effectively as long as the wooden surfaces are structurally sound,” says le Grange.

abeco mastic has about 50 years' service in the South African market and has often been used on floors of over 10 000 m². It produces a jointless, non-dusting, warm and quiet surface which is non-slip, vermin- and damp-proof, and self-healing under heavy traffic.

“abeco mastic is also the ideal repair material for potholed, damaged or ravelled concrete floors, or to repair V-joints in concrete floors. Floors patched on a Saturday morning are normally ready for full traffic by Monday – with no risk of the patches pulling out,” Le Grange adds.

a.b.e. Construction Chemicals
T +27 (0)11 306 9000



Work in progress on the application of the abeco mastic over old timber floors at the Sundays River Citrus Company.