



tradition • innovation • quality

a.b.e.® Construction Chemicals

# dura.®flex abe® Unigum

## RHEMA CHURCH SOUTH (ALBERTON), WATERPROOFING



### PROJECT LOCATION

57 Summit Drive Rispark, Alberton



### SIZE OF PROJECT

100 m<sup>2</sup> dura.flex  
400 m<sup>2</sup> unigum



### NATURE OF PROJECT

**dura.®flex** is a ready to use flexible slurry based on a special synthetic resin dispersion and a blend of selected cements mixed with carefully graded aggregate was applied under the tiled area of the church offices.

**abe®Unigum 3mm** and **4mm** torch on, primed with bitu.®prime was installed on flat concrete roof areas to ensure a fully waterproof roof. **abe®Unigum 3mm** was coated with **silvakote** a UV reflective and protective aluminium paint for exposed concrete and metal roofs.

The roof needs to be maintained every 2 to 3 years by overcoating with **silvakote** and inspecting all laps & joints.



### OTHER PRODUCTS USED/SPECIFIED

- bitu.®prime
- ecofelt membrane



### CONTRACTOR DETAILS

Ironclad Waterproofing Contractors



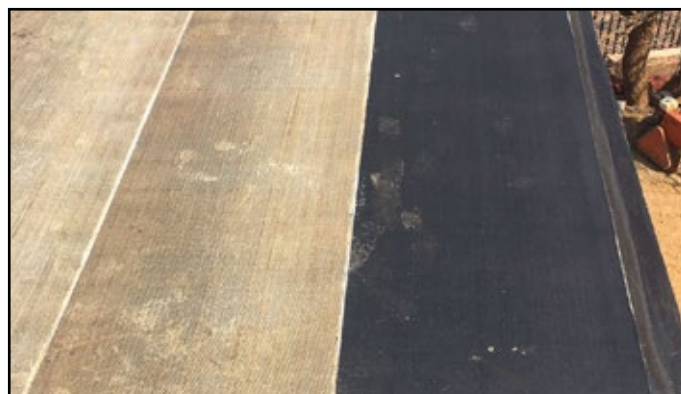
### PROJECT START & END DATES

September 2017



### a.b.e.® EMPLOYEE INVOLVED

Marchant Wolfaardt



a.b.e.® is a CHRYSO Group Company

**CHRYSO**