



tradition • innovation • quality

a.b.e.® Construction Chemicals



# abe.® cote 337 tough epoxy paint



## UNITRANS FORD CONCRETE REPAIR & FLOOR COATING



### PROJECT LOCATION

Cnr N1 & Rissik Street, Louis Trichardt



### SIZE OF PROJECT

1 300 m<sup>2</sup>



### NATURE OF PROJECT

**abe.® cote 337** is a protective, decorative and oil resistant coating and may be used on both floors and walls of factories and warehouses, parking facilities, shopping areas, nuclear decontaminable areas, dairies and milking parlours. **abe.® cote 337** may be applied to damp surfaces, easily over coated at any time for maintenance, tough protective and decorative coating, oil and petrol resistant.

**\*Wine industry approved.**



### OTHER PRODUCTS USED

epidermix 318

abe.® screed SLC P



### CONTRACTOR DETAILS

Eben Moller



### PROJECT START & END DATES

10 December 2018 - 23 January 2019



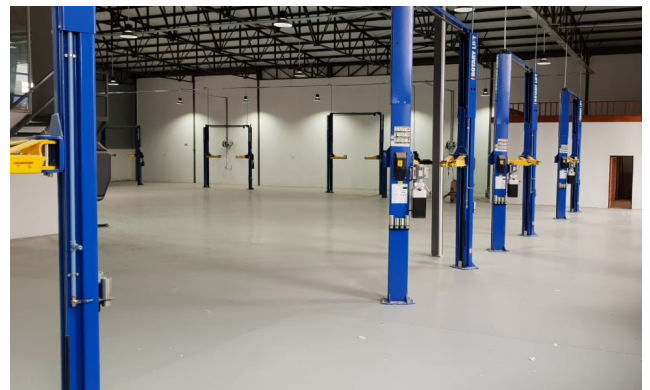
### a.b.e.® EMPLOYEE INVOLVED

Ian Deale



### COLOURS

Colour chart available view datasheet for guidance. Note: In order to limit minor colour variations from batch to batch, it is advisable to use product from the same batch on large open areas. Batches may be factory blended on request.



a.b.e.® is a CHRYSO Group Company

