

# Shoprite/Checkers

## SELF HEALING FLOORING SYSTEM



SAINT-GOBAIN

### abeco<sup>®</sup> mastic flintkote 3



#### PROJECT LOCATION

14th Avenue, Roodepoort



#### SIZE OF PROJECT

250 m<sup>2</sup>



#### NATURE OF PROJECT - HEAVY DUTY MASTIC FLOORING SYSTEM

abeco<sup>®</sup> mastic has been successfully used in numerous flooring applications and has more than 45 years of service history in the South African market. Single areas laid have often exceeded 10 000 m<sup>2</sup>. Joints are normally unnecessary. Construction joints disappear after a few days of traffic exposure. Also for floor repair, including timber surfaces.

abeco<sup>®</sup> mastic produces a jointless, non-dusting, warm, resilient, quiet floor surface which is non-slip, vermin proof, dampproof, non-flammable and self-healing under traffic including the heaviest loads carried on steel, plastic or rubber-wheeled vehicles. Does not produce disintegration - may be laid over any firm, sound, clean sub-flooring including concrete, asphalt, well-compacted crusher run, steel and timber. Laid to a nominal 12 mm dry thickness abeco<sup>®</sup> mastic dries to a black colour.

#### SPECIALIST APPLICATOR

Floorzone

#### a.b.e. EMPLOYEE

Tiaan Lerm

#### PROJECT START & END DATES

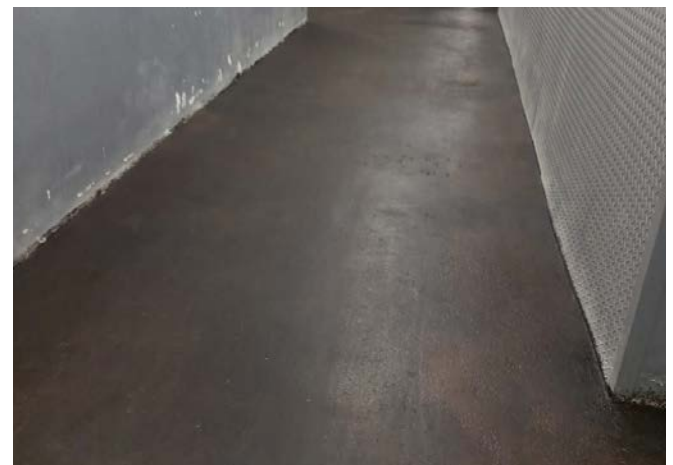
September 2023



abeco<sup>®</sup> mastic is ideal for warehouses, railway platforms, printing works, grocery warehouses, explosive magazines, heavily trafficable corridors, textile factories, goods sheds, loading bays, paper storage and packing areas, cold rooms, carpentry workshops, flour mills, ships decks.



abeco<sup>®</sup> mastic is a cold laid bituminous mastic consisting of stone chippings, portland cement, sand and a binder, **flintkote 3**.



abeco<sup>®</sup> mastic dries to a black colour.