



ENERGY INFRASTRUCTURE SOLUTIONS



About Saint-Gobain

Worldwide leader in light and sustainable construction, **Saint-Gobain** designs, manufactures and distributes materials and services for the construction and industrial markets. Its integrated solutions for the renovation of public and private buildings, light construction and the decarbonization of construction and industry are developed through a continuous innovation process and provide sustainability and performance.

About Construction Chemicals

Saint-Gobain's construction chemicals include formulations and finished products for bonding, sealing, waterproofing, protecting, reinforcing, and finishing various building materials, both in new construction and renovation, for buildings and infrastructure. These solutions are designed to be more innovative and sustainable, enhancing construction performance, supporting building decarbonization, and simplifying processes for our customers. The main international brands represented are **Weber, Maris** including **a.b.e.**® and **Technical Finishes**. With such innovative solutions that combine sustainability and performance, Saint-Gobain is accelerating its growth in the construction chemicals market.

MAKING THE WORLD A BETTER HOME

Concrete Works

Concrete Repair and Protection

Protective Coatings

Waterproofing

Flooring

Silicones, Sealants and Adhesives

Tile Fixing

ENERGY INFRASTRUCTURE SOLUTIONS

Infrastructure and Civil engineering represent the largest market sector in South Africa, with a substantial size of R116,557 billion. This surpasses sectors such as residential buildings, commercial buildings, and industrial projects. A significant portion of this sector, energy, contributes R29,139 billion, reflecting its crucial role. The National Infrastructure Plan (NIP 2050), formulated by the Department of Public Works and Infrastructure, highlights major investments aimed at enhancing the nation's infrastructure. Saint-Gobain plays a vital role in supporting South Africa's economic growth, social development, and improved connectivity by providing high-quality, reliable product solutions designed to ensure infrastructure resilience.

Profile & Index

PAGE

02-03

Power Stations

04-13

Sub Stations

14-21

Wind Farms

22-25

Solar Farms

26-31



Weber, a division of the Saint-Gobain Group, designs, manufactures, and markets solutions for façade, tiling, flooring, waterproofing, roofing, masonry mortars, plastering mortars and sealants. Weber cares about building better for people and the planet by offering solutions that deliver sustainability and performance.



a.b.e.®, a division of the Saint-Gobain Group specializes in products and systems for construction, waterproofing, flooring, and concrete repair. a.b.e.® provide solutions that address various construction needs, including infrastructure projects, residential buildings, and industrial applications.



Maris, a division of the Saint-Gobain Group, is a leading manufacturer of polyurethane specializing in the research, development, and trading of waterproofing, protective, and repair solutions for over 30 years.



Technical Finishes manufactures specialist epoxy and polyurethane industrial flooring products. As a developer of industry-leading flooring solutions, TF guarantees SABS ISO 9001 quality and offers high-performance products designed to meet the demands of industrial and commercial floor environments.

CONCRETE WORKS				
PRODUCT		DESCRIPTION	FEATURES	TECHNOLOGY
CURING AGENTS				
	duracure WB	Retain moisture in concrete for effective curing. Not to be overcoated.	Low viscosity. For concrete and off-shutter concrete. Dries clear.	Wax Emulsion
	duracure PR	Multi-purpose curing, sealing & protective membrane, can be overcoated.	Clear: external concrete and plaster. White: external concrete structures.	Pliolite Resin Clear/White
	duracure WPR	Resin based concrete curing compound with light reflectance to reduce surface temperature of concrete.	For concrete roads, concrete structures, external hardstands.	White Pigmented Petroleum Resin
	duracure acrylic	Water based, slightly viscous acrylic bonding and curing agent, which dries clear.	Colourless, stain free, UV stable, curing aid and may be overcoated for concrete structures and repairs.	Acrylic Emulsion
WATERSTOPS				
	durajoint SW-B	Integral sealing for construction joints in case in-situ concrete where space or access restricted.	Seals by immediate swelling and by crystallization.	Swellable Waterstop-Bentonite
	durajoint SW-R	Integral sealing for prefabricated concrete joint construction under conditions of confinement.	Seals joints between precast elements.	Swellable Waterstop-Rubber
	durajoint PVC waterstops	Prevent regress or ingress of water/liquids through construction and expansion joints in concrete.	Hydrostatic pressure resistant and UV stable. Withstands a 50 m head of water.	Polyvinyl Chloride Waterstops
STRUCTURAL GROUTING & ANCHORING				
	duragrout®	Structural grout applications i.e. bridge medians and railing posts and anchor bolts.	Fluid, rammable, non-shrink, high strength precision grout.	Cementitious
	duragrout®-HP	Structural non-shrink grout for application where high strength is required.	High performance precision grout.	
	duragrout® CG	Chloride free, fluid shrinkage compensating grout whre clearances are tight. Like grouting pre-stress and post-tensioned cables in concrete, restricted spaces between panels or voids.	Ready to use, aggregate free, high fluidity for cable duct grouting. Can be poured or pumped.	
	abe® chemical anchor MAXX	Anchoring into solid substrates and for use in dry, wet and flooded holes.	Free of styrene, very low odor and ideal for use in confined spaces and indoors.	Vinylester
	epidermix® 324	For anchor bolts and grouting precast elements.	Flowable, high strength structural grout.	Epoxy
	epidermix® 325	Grouting starter bars vertically down. Can be filled.	Quick setting, flowable, structural & chemical resistant.	
	epidermix® 395	Starter bars vertically down. Can be filled.	Quick setting, non-flow, structural & chemical resistant.	
	epidermix® 396	Grouting starter bars horizontally or overhead.	Quick setting, non-flow, structural & chemical resistant.	
	Solidbond 117	High-strength epoxy adhesive.	Rapid setting, high bond strength, durable.	Polyester
	epidermix® 725 & 725 TX	Grouting and anchoring bars, bolts and fixing steel into concrete.	Applied under water, cures in 45 minutes. Rapid strength gain, pourable and paste consistency.	

STRUCTURAL BONDING				
	epidermix® 319	Bedding mortar/adhesive and patching honeycombed concrete surfaces.	High early strength, cures in damp conditions. For precast units, stair treads, joint arises, concrete.	Epoxy
	epidermix® 350	Structural bonding dry-to-dry concrete, steel and various metal components.	High strength, non-slump, non-shrink. Polysulphide modified.	
	Solidbond 117	High-strength epoxy adhesive.	Rapid setting, high bond strength, durable.	
	epidermix® 318	Two component, solvent free, filled, polyamide cured epoxy for repairing and patching defects in concrete, fabricating components and fibre cement.	Non-toxic, excellent water resistance, resists certain solvents, non-slump and damp tolerant.	
RELEASING AGENTS				
	durastrap	Shutter release agent.	Excellent release agent, economical.	Oil Emulsion
	Techfin HP Shutter Release Oil	Shutter release agent for cast and tilt construction.	High performance.	
CONCRETE REPAIR & PROTECTION				
PRODUCT		DESCRIPTION	FEATURES	TECHNOLOGY
CORROSION PROTECTION				
	durarep ZR primer	Steel reinforcing protection.	Zinc rich passivating coating.	Epoxy
	durabond SP	One component slurry primer with active corrosion inhibitors, used for the protection of reinforced steel with excellent adhesion to concrete.	Elastomeric, crack bridging, UV stable, also a bonding slurry. Resistant to water and chloride penetration.	Cementitious
BONDING AGENTS				
	epidermix® 344	Concrete substrates, wet-to-dry adhesive.	Medium open time.	Epoxy
	epidermix® 345		Large open time.	
	Solidkote 110	Wet-to-dry concrete bonding epoxy for concrete repairs and overlays.	High strength wet-to-dry concrete bonding.	
	durabond-GP	General purpose bonding and curing agent.	Vertical, horizontal or overhead applications. Suitable for repairs in immersed conditions.	Acrylic
	duralatex	Additive/bonding primer for cement mortars and screeds.	Improves adhesion, tensile and flexural strengths of sand/cement mixtures permitting thin layers.	Synthetic Resin Polymer

REPAIR MORTARS				
	durarep FR	Structural reinstatement vertically or overhead and honeycomb repairs.	High strength, fibre reinforced, high build, migrating corrosion inhibitor (MCI).	Cementitious
	durarep FS	Fast setting patching mortar for concrete and pavement structures.	High-early final compressive strength, self-compacting, chloride-free and non-shrink.	
	durarep GT – MCI	Trowel or spray applied lightweight reinstatement mortar. For overhead applications.	High strength, dual expansion and migrating corrosion inhibitor.	
	durarep FMC	Structural large repairs used with formwork.	High strength, fluid micro concrete, migrating corrosion inhibitor (MCI).	
	epidermix® 314	Structural reinstatement to vertical, overhead defects, honeycomb and spall repairs.	High early strength, putty consistency, cures in damp conditions.	Epoxy
FAIRING & REPROFILING				
	durarep FC	Smoothing surface imperfections and blowholes.	Thin coat, high strength, feather edge.	Cementitious
	Techfin Speedpatch	Cementitious rapid setting patching and skimming compound.	Rapid setting.	
PROTECTIVE COATINGS				
	duracote WB	Carbonation (inland), chloride (coastal) and other water borne contaminants barrier.	Coloured, UV stable, flexible system, primer and top coat.	Acrylic
	abe® silocoat	Concrete, masonry structures, protection against carbonation, chloride and other water borne contaminants	Elastomeric, crack bridging, UV stable.	Cementitious
	duracote FT	Protection against carbonation, chloride and other water borne contaminants.	Elastomeric, crack bridging, UV stable, Fine textured. Concrete protection.	
	duraslurry	Concrete protection for sub-soil.	Cementitious, 1 part slurry to protect submerged concrete.	
	duraflex®	Waterproofing, protection and repair of new and old concrete structures internally and externally.	Flexible, non-toxic, excellent bond to concrete.	
	durasil SH	Solvent based silane/siloxane water repellent for concrete surfaces.	Water repellent.	Silane-Siloxane
	Hydroseal WB	Water based silane/siloxane water repellent for concrete surfaces.		
	Mucis Mia 100	Migrating corrosion inhibitor protecting impregnation of pre-existing reinforced concrete structures.	Anodic & cathodic protection, normal & pre-compressed structures in heavy stressed conditions.	Water Based Acrylic
	Solidkote UVC	Steel protection polyurethane coating.	Chemical, UV and abrasion resistant.	Polyurethane
	abecote® SF 217	Chemical resistant protection, sealing, laminating, screeding and tile grouting.	Solvent free, novolac modified, high chemical resistance.	Epoxy
	abecote® SF 356	Concrete and steel chemical resistance protection.	Good wear and chemical resistance.	

STRUCTURAL REINSTATEMENT				
	durafibre CFP adhesive	External carbon fibre structural reinforcement, use with durafibre plate.	Non-shrink, excellent adhesion, high strengths and solvent free.	Epoxy
	durafibre CFW resin	Laminating/impregnating resin used in conjunction with durafibre wrap.	Solvent free, self-priming and excellent adhesion to substrates.	
	durafibre CFP	Carbon fibre laminate / plate.	Light weight, quick turn-around time for repair work.	Carbon Fibre Plate
	durafibre CFW	Increase load requirements, damage to structures, durability and design or construction defects/ changes.	Light weight, quick turn-around time for repair work.	Carbon Fibre Wrap
	durafibre rod	12 mm circular rod for new surface-mounted structural strengthening of concrete.	Light weight, bonded and fully encapsulated.	Carbon Fibre Rod
STRUCTURAL CRACK REPAIR				
	epidermix® 395	Fast setting crack repairing liquid compound.	Low viscosity penetrating epoxy.	Epoxy
	Techfin Crack Injection	High strength, pourable, low viscosity, solvent free epoxy resin based crack injection compound with chemical resistance.	Seals cracks, fills micro cavities and voids in concrete and stops water ingress. Tolerant of damp surfaces and resists hydrostatic pressure.	
	Solidkote 345LV	Very low viscosity crack injection epoxy.	For crack widths of < 1 mm.	
STITCHING				
	epidermix® 372	Adhesive, filler and grouting medium.	General purpose adhesive for most materials.	Epoxy
STEEL PROTECTION				
PRIMERS				
	4-metal	Corrosion inhibitor coating.	4-in-1 system: direct to metal, direct to rust, primer and top coat.	Acrylic
	Solidguard 366 Metal Primer	Zinc Phosphate epoxy steel coating with corrosion inhibitors.	Can be overcoated with solvent-less epoxy or solvent based systems with damp tolerance and cures < 5 °C.	Epoxy
CORROSION PROTECTION				
	Solidguard 88	Multi-purpose, epoxy self-priming metal coating for corrosion protection.	Excellent adhesion to steel, low temperature cure and crack resistant.	Epoxy
	Solidkote UVC	Steel protection polyurethane coating.	Chemical, UV and abrasion resistant.	Polyurethane



POWER STATIONS

SEALANTS & ADHESIVES			
PRODUCT	DESCRIPTION	FEATURES	TECHNOLOGY
PRIMERS			
epidermix® 326	Epoxy primer for porous surfaces.	Complete coverage, resists water immersion.	Epoxy
bituprime	Priming and sealing solution for porous and non-porous surfaces.	Versatile, easy to apply, economical for concrete and metal surfaces.	Bitumen
ADHESIVES			
epidermix® 316	Slot sealing compound for horizontal surfaces.	Cold applied, self-leveling, fast setting, prevents water ingress.	Epoxy Tar
epidermix® 338 HBT	Epoxy adhesive/grout for joining metal or cementitious pipe sections.	High strength, durable, excellent adhesion in harsh environments.	Epoxy
epidermix® 372	General-purpose adhesive for various materials.	Versatile, strong, durable under various conditions.	
Solidbond 305	Epoxy adhesive for road studs/ cats eyes.	Strong bond strength, rapid cure, excellent durability.	
Solidbond 117	High-strength epoxy adhesive.	Rapid setting, high bond strength, durable.	
MANHOLE SEALANTS & BUTYLS			
abe® bitujoint putty	Mastic filler for covered static vertical and inclined joints i.e. manhole rings	Cold applied with high adhesion, ensuring a durable seal in moisture-exposed areas.	Bitumen
abe® bitumen manhole sealer	Pre-formed, pressure-sensitive sealant for concrete butt joints.	Excellent waterproofing properties, providing a reliable seal against water penetration.	
abe® butyl joint sealer	Pre-formed butyl sealant for concrete butt joints.	Solvent-free, flexible, and durable, offering long-term protection in water-exposed environments.	Butyl Rubber
CONSTRUCTION SEALING			
Dowsil™ 813 C	Neutral silicone sealant for expansion and perimeter joints.	Weather-resistant, highly flexible, and provides strong adhesion for long-lasting sealing in varying conditions.	Silicone

EXPANSION AND CONTRACTION JOINTS				
	durakol G HM	High-modulus joint sealant for sealing movement joints	Accommodates cyclic movement, provides excellent adhesion in challenging conditions, suitable for potable water applications.	Polysulphide
	flexoplastic® B	Hot-applied sealing compound for low movement cracks and joints.	Protects joint edges from wear and resists debris ingress for long-term performance.	Bitumen
	flexothane® 27	Single-component hybrid sealant for general construction.	Offers chemical resistance, for interior applications, ensuring durable sealing.	Polyurethane
	flexothane® CTW	Sealant for low-movement joints in damp environments.	Provides chemical resistance and bonds well to damp surfaces for long-lasting protection.	Polyurethane/ Epoxy/Tar
	flexothane® HS	Elastomeric fuel-resistant joint sealant.	Very flexible, chemical resistant, self-leveling, easy to apply without tooling.	Polyurethane
HIGH MOVEMENT EXPANSION AND CONTRACTION JOINTS				
	Dowsil™ 888	Silicone joint sealant for expansion joints.	Maintains flexibility, UV resistant, and fuel resistant, providing long-lasting protection.	Silicone
	Dowsil™ 890 SL	Self-leveling silicone sealant for horizontal joints.	Long-lasting, weather-resistant, accommodates joint movement.	
AUXILLIARIES				
	duracord and durasheet 40/100	Closed cell polyethylene joint formers and back-up material.	Flexible, compressible, and non-absorbent, offering excellent resilience and water resistance for long-term durability.	Polyethylene

WATERPROOFING

PRODUCT		DESCRIPTION	FEATURES	TECHNOLOGY
PRIMERS				
	bituprime	Bituminous priming and sealing solution with petroleum solvents.	Seals and primes porous and non-porous surfaces. Used with bituminous compounds and sealants. Economical and easy to apply.	Bitumen
	Mariseal® Aqua Primer	Transparent two-component water based epoxy primer.	Smooth application with roller or brush. Low odor. Bonds well to damp surfaces. Superior tensile strength.	Epoxy
	Mariseal® 710	Transparent polyurethane quick drying solvent based primer.	Rigid and deep penetrating. Water-resistant, high tensile strength. Dust preventive and chemical resistant.	Polyurethane
	abeproof liquid membrane primer	Solvent borne, liquid primer applied to most building substrates.	Excellent surface conditioner, durable, quick drying, moisture insensitive.	Solvent Based
	abeproof acrylic water based membrane primer	Water based acrylic primer, sealer and bonding agent for the abeproof liquid acrylic systems.	Easy to apply. Water based and non-toxic. Excellent bonding capability.	Water Based
	4-metal	Single pack, water based metal primer.	User-friendly and water based. Corrosion resistant and can be overcoated. Strong adhesion and quick drying.	
CEMENTITIOUS				
	duraflex®	Flexible slurry with synthetic resin, selected cements, and graded aggregate.	Water-resistant, dual side application with strong adhesion. Comprehensive structure protection.	Cementitious
	duraslurry	Concrete, plaster and brick surfaces, dams, ponds, basements, sewage plants, supporting walls.	Cost effective waterproofing for new/old buildings. Dual side application. Ideal for various structures.	
	duraproof krystalkote	Cementitious waterproofing system by crystallization.	Easy-to-apply, single-component. Positive and negative waterproofing for concrete. Protects against rising dampness.	
COLD APPLIED MEMBRANES				
	ecofelt	100% Polypropylene continuous filament saturation membrane.	A highly porous, three-dimensional fiber, uniformly needle-punched. Used with cement composites and is alkali-resistant.	Polypropylene
	abe® peel and stick membrane	Self-adhesive waterproofing membrane comprising of a unique ethylene polymer modified bitumen	An exposed spunbond, non-woven polypropylene fabric, it is resistant to alkali solutions and compatible with cementitious and acrylic systems.	
	Mariseal® Fabric	Polyester, non-woven geotextile reinforcing fabric (110 g/m²) or (60 g/m²)	Easy application, compatible with Mariseal system, high tear strength and UV-resistant.	Geotextile
	Malthoid 3 Ply	Asphaltic waterproofing membrane with a fibre felt carrier	High resistance to puncture, self healing. Easy to apply, economical.	Asphaltic Bitumen
	Bidim®	Non-woven, continuous filament, needle-punched, polyester geotextile fabric U14.	Strong and flexible. Enhances subsoil drain efficiency. Protects roof gardens and window boxes, maintains drainage.	Polyester

TORCH-ON MEMBRANES

	abedex® V-SR 3 mm	Elastoplastomeric Compound (BPP) Reinforced Polyester membrane available in 3 mm.	Suitable for double-layer parking deck application with abedex® AT 4 mm. High elasticity and temperature stability.	Bitumen
	abedex® V-SR 4 mm	Elastoplastomeric Compound (BPP) Reinforced Polyester membrane available in 4 mm.	High elongation and temperature stability. Sand-coated top for easy unrolling and coating. Flamina-lined underside for quick adhesion.	
	abedex® Unigum 4 mm	Reinforced polymer-modified bitumen with rot-proof fabric and fiberglass mat.	Stable across various temperatures. Suitable for new/old structures. Ideal for diverse structures, including foundations.	
	abedex® HM	Special BPE elastomeric compound reinforced with high-weight sponbound polyester reinforced in fibreglass.	Flexible at low temperatures. Strong joints and fatigue-resistant elasticity. Ideal for concrete bridge decks and trafficked areas.	

LIQUID APPLIED MEMBRANES

	Mariseal® 250	Liquid-applied polyurethane waterproofing membrane.	Liquid applied polyurethane membrane. Resistant to water, frost and root penetration.	Polyurethane
	Mariseal® 400	Aliphatic polyurethane top coat, UV stable, for light pedestrian traffic areas.	Roller or spray apply. Enhances abrasion and wear resistance. UV and colour stable. Suitable for light foot traffic	
	Mariseal® 460	Aliphatic waterproofing UV stable Membrane for roofs	UV stable, fast curing. Suitable for light pedestrian traffic. Seamless and easy local repairs.	
	Mariseal® 420	Aliphatic polyurethane top coat, UV stable, for public, pedestrian & vehicular traffic areas.	Easy roller or spray applied. Durable against heavy abrasion. UV stable. Suitable for heavy traffic.	
	Mariseal® 670	Solvent based, one-component, bitumen-modified polyurethane membrane for durable waterproofing.	Easy application for foundations and retaining walls, seamless and joint free. Root penetration & chemical resistance.	
	super laycryl®	High quality flexible bitumen acrylic emulsion that is a highly flexible.	All-in-one system. Excellent weathering, adhesion, tough, flexible, non-toxic. Available in many colours.	Bitumen Acrylic
	super laykold®	Rubberized bitumen emulsion.	Integrated system, strong adhesion to foundations. Durable and flexible for various conditions.	Bitumen
	silvakote®	Reflective bitumen based aluminium paint.	Reflective aluminum paint for various surfaces. UV resistant. Highly reflective. Easy to apply.	
	bituseal plastic	General purpose hydrocarbon solvent-borne, asbestos-free, reinforced bituminous heavy duty mastic sealer.	Economical waterproofing compound. Easy to apply. May be over-coated.	Solvent
	abeproof liquid membrane	Single pack solvent borne, highly elastic rubberized, durable, low maintenance liquid membrane for waterproofing.	Seamless. Superior water resistance. High elasticity and durability. Fast curing. Moisture insensitive. UV stable.	
	abeproof PU ECO	High Performance Eco friendly PU liquid applied waterproofing membrane.	Environmentally friendly, high elongation and UV resistant. Fast drying and suitable for confined areas.	

DRAINAGE MEMBRANE

	abedrain	Dimpled high-density polyethylene protection membrane.	Resistant to chemicals and pressure. Provides robust foundation protection with superior drainage capacity.	Polyethylene
	abedrain G	Dimpled high density polyethylene protection & drainage membrane with a polyester geotextile layer.	Versatile and economical. Resistant to chemicals and roots. Superior drainage, thermal insulation, and enhanced strength.	

FLOORING

PRODUCT	DESCRIPTION	FEATURES	TECHNOLOGY
PRIMERS & SURFACE TREATMENT			
Solidkote UP Epoxy Primer	Universal purpose high build clear epoxy primer for concrete floors.	Solvent-free, high bond strength, highly durable, chemical resistant, moisture tolerant, good low temperature cure.	Epoxy
abecote® 337 tough epoxy paint	Water-dispersed epoxy paint for protective and decorative coatings on cementitious, masonry, and asphaltic surfaces.	Tough, oil- and petrol-resistant, economical, easily overcoated, non-toxic.	
Solidkote STP Primer	Solvent-free primer for low temperature cure.	High chemical resistance, solvent-free, damp tolerant.	
abepime SLC acrylic primer	Sealing and adhesion primer for cementitious systems.	Enhances adhesion, provides a seal.	Acrylic Emulsion
Polyscreed PU Primer	Cement primer forming a watertight moisture barrier.	Pore filling, antimicrobial, solvent-free, HACCP compliant.	Polyurethane
Solidkote SBP	Primer for performance resin systems, mainly for floor applications.	High chemical resistance, high abrasion and thermal shock resistance, fast curing.	Solvent Based Epoxy
Solidkote WB Clear	Clear topcoat and primer for concrete floors and walls.	Versatile sealer, damp tolerant, good colour stability, chemical and abrasion resistant, VOC compliant.	Water Based Epoxy
duralatex	Additive/bonding primer for cement mortars and screeds	Improves adhesion, tensile and flexural strengths of sand/cement mixtures permitting thin layers	Resin Polymer
DRY SHAKE, FLOOR HARDENER & DENSIFIERS			
abeplate	Metallic aggregate surface hardener.	High abrasion and impact resistance.	Cementitious
abecron LA	Natural, level assist, dustless surface hardener.	High abrasion resistance, dustless.	
Pentra-Sil® (NL)	Lithium polysilicate densifier for concrete.	Improves hardness, abrasion resistance, and reduces dusting.	Silicate
Lisofloor 950	Hardener and sealer for new or old concrete surfaces.	Increases surface hardness, excellent abrasion resistance, waterproofing, VOC compliant.	
abe® Conseal	Concrete surface hardener.	Improves impermeability, excellent adhesion, and abrasion properties, resists water penetration.	
COATINGS			
abecote® SF 217	Very high chemical resistance epoxy coating.	Exceptional chemical resistance, durable.	Epoxy
Solidkote Robust	High build, pigmented topcoat for concrete flooring.	Durable, chemical-resistant, solvent-free, high build in one application.	
Solidkote UVC	Aliphatic polyurethane coating for UV stable finish.	High gloss finish, high abrasion resistance, chemical resistant, easy to apply.	Polyurethane
Solidkote Ultra Tough	Hard wearing, polyaspartic coating with a high gloss finish.	Excellent chemical and abrasion resistance, UV stable, rapid curing.	Polyaspartic
Solidkote Q9 Sealer	Seal flooring, concrete, and porous substrates.	Environmentally friendly, protects against stains, good chemical and abrasion resistance	Water-Based Urethane

FLOOR SCREED

abedur® S	High strength and abrasion-resistant screed.	Durable, high abrasion resistance.	Cementitious
abescreed duraTop	Non-shrink overlay for smoothing and raising floors.	Fast track, durable, smoothing and raising.	
abescreed SLCP 25	Rapid hardening screed for smoothing and leveling floors in refurbishment and new construction.	Fast setting, walkable in 6 hours, self-levelling, pumpable or hand-laid.	

INDUSTRIAL FLOOR SYSTEMS

Polyscreed MD	Heavy-duty, flow-applied, liquid flooring topping.	Antimicrobial, heat resistant, excellent abrasion resistance, solvent-free.	Polyurethane
Polyscreed RT	Heavy duty polyurethane flooring.	Antimicrobial protection, easy to clean, non-slip matt finish, solvent-free application.	
Solidflow SL 2000	Self-leveling epoxy floor system for concrete floors.	Seamless finish, easy to clean, excellent chemical and abrasion resistance, hard wearing, non-dusting, rapid installation.	Epoxy

FLOOR SEALERS

Solidkote 110	Wet-to-dry concrete bonding epoxy for concrete repairs and overlays.	High strength wet-to-dry concrete bonding.	Epoxy
-------------------------------	--	--	-------

TILE FIXING

PRODUCT	DESCRIPTION	FEATURES	TECHNOLOGY
SURFACE PREPARATION & PRIMERS			
Plaskey	Cement based primer and surface preparation material that is suitable for interior and exterior use.	All purpose preparation for tiling. Creates a mechanical and chemical bond for the adhesive.	Cementitious
Key-it	Latex based liquid primer and keying agent specifically formulated for use in conjunction with Plaskey.	Suitable for areas that will be permanently wet. Strengthening agent.	
duraflex®	Waterproof slurry before tiling	Flexible slurry with water resistance and strong adhesion.	

ADHESIVES

QuickSet 6	High strength, 3-20 mm bed tile adhesive for porcelain, ceramic, brick, clay, cement and natural stone tiles to walls and floors.	6-hour set. Interior and exterior application.	Cementitious
Rapid 12	Applied in bed thicknesses 3 - 6 mm for the fixing of porcelain, ceramic, clay, brick, cement, and natural ttone tiles to walls and floors.	12-hour set. Interior and exterior application.	
Ultra-flex	The perfect adhesive for large format tiles. It is a highly flexible, high strength, rapid-set cement based tile adhesive suitable for wall and floors.	Adhesive designed to absorb lateral movement.Suitable for use with under floor heating.	
Superflex	High-strength, ready-mixed, thin bed paste tile adhesive for the fixing of ceramic, porcelain, natural stone, brick and clay tiles.	Exteior & interior, ceramic & porcelain, wall and floors.	
Weber White	Multi-purpose adhesive for light coloured, marble or natural stone tiles.	Non-staining effect. Extra white.	

GROUTS

Weber Tylon Tile Grout	All purpose grout suitable for walls and floors. For wet areas replace the water in the mix with Bond-It.	Suitable for joint widths up to 8 mm. Available in a range of colours.	Cementitious
Weberepox easy	A two-part, chemical resistant epoxy adhesive and grout for interior and exterior use available in a range of colours.	Resistant to chemicals. Flexible and high bond strength.	Epoxy



SUB STATIONS

CONCRETE WORKS

PRODUCT	DESCRIPTION	FEATURES	TECHNOLOGY
CURING AGENTS			
duracure WB	Retain moisture in concrete for effective curing. Not to be overcoated.	Low viscosity. For concrete and off-shutter concrete. Dries clear.	Wax Emulsion
duracure PR	Multi-purpose curing, sealing & protective membrane, can be overcoated.	Clear: external concrete and plaster. White: external concrete structures.	Pliolite Resin Clear/White
duracure acrylic	Water based, slightly viscous acrylic bonding and curing agent, which dries clear.	Colourless, stain free, UV stable, curing aid and may be overcoated for concrete structures and repairs.	Acrylic Emulsion

STRUCTURAL GROUTING & ANCHORING

duragrout®	Structural grout applications i.e. anchor bolts and for equipment subjected to heavy vibrational and dynamic loading.	Fluid, non-shrink, high strength precision grout.	Cementitious
duragrout®-HP	Structural non-shrink grout for application where high strength is required.	High performance precision grout.	
abe® chemical anchor MAXX	Anchoring into solid substrates and for use in dry, wet and flooded holes.	Free of styrene, very low odor and ideal for use in confined spaces and indoors.	Vinylester
epidermix® 324	For anchor bolts and grouting precast elements.	Flowable, high strength structural grout.	Epoxy
epidermix® 395	Starter bars vertically down. Can be filled.	Quick setting, non-flow, structural & chemical resistant.	
epidermix® 725 & 725.TX	Grouting and anchoring bars, bolts and fixing steel into concrete.	Applied under water, cures in 45 minutes. Rapid strength gain, pourable and paste consistency.	Polyester

STRUCTURAL BONDING (PRECAST ELEMENTS)

epidermix® 319	Bedding mortar/adhesive and patching honeycombed concrete surfaces.	High early strength, cures in damp conditions. For precast units, stair treads, joint arises, concrete.	Epoxy
epidermix® 350	Structural bonding dry-to-dry concrete, steel and various metal components.	High strength, non-slump, non-shrink. Polysulphide modified.	
Solidbond 117	High-strength epoxy adhesive.	Rapid setting, high bond strength, durable.	
epidermix® 318	Two component, solvent free, filled, polyamide cured epoxy for repairing and patching defects in concrete, fabricating components and fibre cement.	Non-toxic, excellent water resistance, resists certain solvents, non-slump and damp tolerant.	

RELEASING AGENTS

durastrip	Shutter release agent.	Excellent release agent, economical.	Oil Emulsion
Techfin HP Shutter Release Oil	Shutter release agent for cast and tilt construction.	High performance.	

CONCRETE REPAIR & PROTECTION

PRODUCT	DESCRIPTION	FEATURES	TECHNOLOGY
CORROSION PROTECTION			
durarep ZR primer	Steel reinforcing protection.	Zinc rich passivating coating.	Epoxy
durabond SP	One component slurry primer with active corrosion inhibitors, used for the protection of reinforced steel with excellent adhesion to concrete.	Elastomeric, crack bridging, UV stable, also a bonding slurry. Resistant to water and chloride penetration.	Cementitious

BONDING AGENTS

epidermix® 344	Concrete substrates, wet-to-dry adhesive.	Medium open time.	Epoxy
epidermix® 345		Large open time.	
Solidkote 110	Wet-to-dry concrete bonding epoxy for concrete repairs and overlays.	High strength wet-to-dry concrete bonding.	Acrylic
durabond-GP	General purpose bonding and curing agent.	Vertical, horizontal or overhead applications. Suitable for repairs in immersed conditions.	
duralatex	Additive/bonding primer for cement mortars and screeds.	Improves adhesion, tensile and flexural strengths of sand/cement mixtures permitting thin layers.	Synthetic Resin Polymer

REPAIR MORTARS

durarep FR	Structural reinstatement vertically or overhead and honeycomb repairs.	High strength, fibre reinforced, high build, migrating corrosion inhibitor (MCI).	Cementitious
durarep FS	Fast setting patching mortar for concrete and pavement structures.	High-early final compressive strength, self-compacting, chloride-free and non-shrink.	
durarep GT – MCI	Trowel or spray applied lightweight reinstatement mortar. For overhead applications.	High strength, dual expansion and migrating corrosion inhibitor.	
durarep P & S	Polymer modified, shrinkage compensated patching in concrete.	Fibre reinforced, chloride free, non-toxic, for applications 5 - 40 mm thick.	Epoxy
durarep FMC	Structural large repairs used with formwork.	High strength, fluid micro concrete, migrating corrosion inhibitor (MCI).	
epidermix® 314	Structural reinstatement to vertical, overhead defects, honeycomb and spall repairs	High early strength, putty consistency, cures in damp conditions.	



SUB STATIONS

FAIRING & REPROFILING

durarep FC	Smoothing surface imperfections and blowholes.	Thin coat, high strength, feather edge.	Cementitious
Techfin Speedpatch	Cementitious rapid setting patching and skimming compound.	Rapid setting.	

PROTECTIVE COATINGS

duracote WB	Carbonation (inland), chloride (coastal) and other water borne contaminants barrier.	Coloured, UV stable, flexible system, primer and top coat.	Acrylic
duracote FT	Protection against carbonation, chloride and other water borne contaminants.	Elastomeric, crack bridging, UV stable, Fine textured. Concrete protection.	Cementitious
duraslurry	Concrete protection for sub-soil.	Cementitious, 1 part slurry to protect submerged concrete.	
duraflex®	Waterproofing, protection and repair of new and old concrete structures internally and externally.	Flexible, non-toxic, excellent bond to concrete.	
durasil SH	Solvent based silane/siloxane water repellent for concrete surfaces.	Water repellent.	Silane-Siloxane
Hydroseal WB	Water based silane/siloxane water repellent for concrete surfaces.		
Solidkote UVC	Steel protection polyurethane coating.	Chemical, UV and abrasion resistant.	Polyurethane

STRUCTURAL CRACK REPAIR

epidermix® 395	Fast setting crack repairing liquid compound.	Low viscosity penetrating epoxy.	Epoxy
Techfin Crack Injection	High strength, pourable, low viscosity, solvent free epoxy resin based crack injection compound with chemical resistance.	Seals cracks, fills micro cavities and voids in concrete and stops water ingress. Tolerant of damp surfaces and resists hydrostatic pressure.	
Solidkote 345LV	Very low viscosity crack injection epoxy.	For crack widths of < 1 mm.	

SEALANTS & ADHESIVES

PRODUCT	DESCRIPTION	FEATURES	TECHNOLOGY
---------	-------------	----------	------------

PRIMERS

epidermix® 326	Epoxy primer for porous surfaces.	Complete coverage, resists water immersion.	Epoxy
--------------------------------	-----------------------------------	---	-------

ADHESIVES

epidermix® 372	General-purpose adhesive for various materials.	Versatile, strong, durable under various conditions.	Epoxy
Solidbond 305	Epoxy adhesive for road studs/ cats eyes.	Strong bond strength, rapid cure, excellent durability.	
Solidbond 117	High-strength epoxy adhesive.	Rapid setting, high bond strength, durable.	

CONSTRUCTION SEALING

Dowsil™ 813 C	Neutral silicone sealant for expansion and perimeter joints.	Weather-resistant, highly flexible, and provides strong adhesion for long-lasting sealing in varying conditions.	Silicone
-------------------------------	--	--	----------

EXPANSION AND CONTRACTION JOINTS

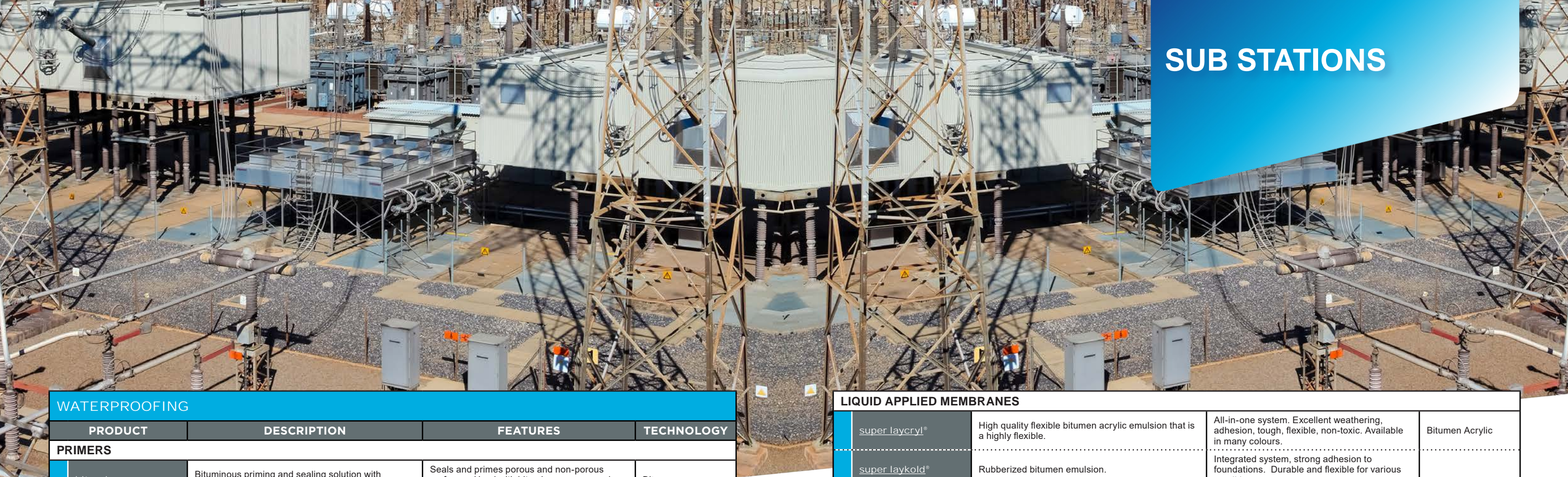
flexothane® 27	Single-component hybrid sealant for general construction.	Offers chemical resistance, for interior applications, ensuring durable sealing.	Polyurethane
--------------------------------	---	--	--------------

HIGH MOVEMENT EXPANSION AND CONTRACTION JOINTS

Dowsil™ 888	Silicone joint sealant for expansion joints.	Maintains flexibility, UV resistant, and fuel resistant, providing long-lasting protection.	Silicone
-----------------------------	--	---	----------

AUXILLIARIES

duracord and durasheet 40/100	Closed cell polyethylene joint formers and back-up material.	Flexible, compressible, and non-absorbent, offering excellent resilience and water resistance for long-term durability.	Polyethylene
---	--	---	--------------



SUB STATIONS

WATERPROOFING			
PRODUCT	DESCRIPTION	FEATURES	TECHNOLOGY
PRIMERS			
bituprime	Bituminous priming and sealing solution with petroleum solvents.	Seals and primes porous and non-porous surfaces. Used with bituminous compounds and sealants. Economical and easy to apply.	Bitumen
abeproof liquid membrane primer	Solvent borne, liquid primer applied to most building substrates.	Excellent surface conditioner, durable, quick drying, moisture insensitive.	Solvent Based
abeproof acrylic water based membrane primer	Water based acrylic primer, sealer and bonding agent for the abeproof liquid acrylic systems.	Easy to apply. Water based and non-toxic. Excellent bonding capability.	Water Based
CEMENTITIOUS			
duraflex®	Flexible slurry with synthetic resin, selected cements, and graded aggregate.	Water-resistant, dual side application with strong adhesion. Comprehensive structure protection.	Cementitious
duraslurry	Concrete, plaster and brick surfaces, dams, ponds, basements, sewage plants, supporting walls.	Cost effective waterproofing for new/old buildings. Dual side application. Ideal for various structures.	
duraproof krystalkote	Cementitious waterproofing system by crystallization.	Easy-to-apply, single-component. Positive and negative waterproofing for concrete. Protects against rising dampness.	
COLD APPLIED MEMBRANES			
ecofelt	100% Polypropylene continuous filament saturation membrane.	A highly porous, three-dimensional fiber, uniformly needle-punched. Used with cement composites and is alkali-resistant.	Polypropylene
abe® peel and stick membrane	Self-adhesive waterproofing membrane comprising of a unique ethylene polymer modified bitumen	An exposed spunbond, non-woven polypropylene fabric, it is resistant to alkali solutions and compatible with cementitious and acrylic systems.	
Malthoid 3 Ply	Asphaltic waterproofing membrane with a fibre felt carrier	High resistance to puncture, self healing. Easy to apply, economical.	Asphaltic Bitumen
TORCH-ON MEMBRANES			
abedex® V-SR 3 mm	Elastoplastomeric Compound (BPP) Reinforced Polyester membrane available in 3 mm.	Suitable for double-layer parking deck application with abedex® AT 4 mm. High elasticity and temperature stability.	Bitumen
abedex® V-SR 4 mm	Elastoplastomeric Compound (BPP) Reinforced Polyester membrane available in 4 mm.	High elongation and temperature stability. Sand-coated top for easy unrolling and coating. Flamina-lined underside for quick adhesion.	
abedex® Unigum 4 mm	Reinforced polymer-modified bitumen with rot-proof fabric and fiberglass mat.	Stable across various temperatures. Suitable for new/old structures. Ideal for diverse structures, including foundations.	
abedex® HM	Special BPE elastomeric compound reinforced with high-weight sponbound polyester reinforced in fibreglass.	Flexible at low temperatures. Strong joints and fatigue-resistant elasticity. Ideal for concrete bridge decks and trafficked areas.	

LIQUID APPLIED MEMBRANES			
super laycryn®	High quality flexible bitumen acrylic emulsion that is a highly flexible.	All-in-one system. Excellent weathering, adhesion, tough, flexible, non-toxic. Available in many colours.	Bitumen Acrylic
super laykold®	Rubberized bitumen emulsion.	Integrated system, strong adhesion to foundations. Durable and flexible for various conditions.	Bitumen
silvakote®	Reflective bitumen based aluminium paint.	Reflective aluminum paint for various surfaces. UV resistant. Highly reflective. Easy to apply.	
bituseal plastic	General purpose hydrocarbon solvent-borne, asbestos-free, reinforced bituminous heavy duty mastic sealer.	Economical waterproofing compound. Easy to apply. May be over-coated.	
abeproof liquid membrane	Single pack solvent borne, highly elastic rubberized, durable, low maintenance liquid membrane for waterproofing.	Seamless. Superior water resistance. High elasticity and durability. Fast curing. Moisture insensitive. UV stable.	Solvent
abeproof PU ECO	High performance eco friendly PU liquid applied waterproofing membrane.	Environmentally friendly, high elongation and UV resistant. Fast drying and suitable for confined areas.	Polyurethane
DRAINAGE MEMBRANE			
abedrain	Dimpled high-density polyethylene protection membrane.	Resistant to chemicals and pressure. Provides robust foundation protection with superior drainage capacity.	Polyethylene
abedrain G	Dimpled high density polyethylene protection & drainage membrane with a polyester geotextile layer.	Versatile and economical. Resistant to chemicals and roots. Superior drainage, thermal insulation, and enhanced strength.	



SUB STATIONS

FLOORING			
PRODUCT	DESCRIPTION	FEATURES	TECHNOLOGY
PRIMERS & SURFACE TREATMENT			
Solidkote UP Epoxy Primer	Universal purpose high build clear epoxy primer for concrete floors.	Solvent-free, high bond strength, highly durable, chemical resistant, moisture tolerant, good low temperature cure.	Epoxy
abecote® 337 tough epoxy paint	Water-dispersed epoxy paint for protective and decorative coatings on cementitious, masonry, and asphaltic surfaces.	Tough, oil- and petrol-resistant, economical, easily overcoated, non-toxic.	
Solidkote STP Primer	Solvent-free primer for low temperature cure.	High chemical resistance, solvent-free, damp tolerant.	
abeprime SLC acrylic primer	Sealing and adhesion primer for cementitious systems.	Enhances adhesion, provides a seal.	Acrylic Emulsion
Polyscreed PU Primer	Cement primer forming a watertight moisture barrier.	Pore filling, antimicrobial, solvent-free, HACCP compliant.	Polyurethane
Solidkote SBP	Primer for performance resin systems, mainly for floor applications.	High chemical resistance, high abrasion and thermal shock resistance, fast curing.	Solvent Based Epoxy
Solidkote WB Clear	Clear topcoat and primer for concrete floors and walls.	Versatile sealer, damp tolerant, good colour stability, chemical and abrasion resistant, VOC compliant.	Water Based Epoxy
duralatex	Additive/bonding primer for cement mortars and screeds	Improves adhesion, tensile and flexural strengths of sand/cement mixtures permitting thin layers	Resin Polymer
DRY SHAKE, FLOOR HARDENER & DENSIFIERS			
abeplate	Metallic aggregate surface hardener.	High abrasion and impact resistance.	Cementitious
abecron LA	Natural, level assist, dustless surface hardener.	High abrasion resistance, dustless.	
Pentra-Sil² (NL)	Lithium polysilicate densifier for concrete.	Improves hardness, abrasion resistance, and reduces dusting.	Silicate
Lisofloor 950	Hardener and sealer for new or old concrete surfaces.	Increases surface hardness, excellent abrasion resistance, waterproofing, VOC compliant.	
abe® Conseal	Concrete surface hardener.	Improves impermeability, excellent adhesion, and abrasion properties, resists water penetration.	

COATINGS				
	abecote® SF 217	Very high chemical resistance epoxy coating.	Exceptional chemical resistance, durable.	Epoxy
	Solidkote Robust	High build, pigmented topcoat for concrete flooring.	Durable, chemical-resistant, solvent-free, high build in one application.	
	Solidkote UVC	Aliphatic polyurethane coating for UV stable finish.	High gloss finish, high abrasion resistance, chemical resistant, easy to apply.	Polyurethane
	Solidkote Ultra Tough	Hard wearing, polyaspartic coating with a high gloss finish.	Excellent chemical and abrasion resistance, UV stable, rapid curing.	Polyaspartic
	Solidkote Q9 Sealer	Seal flooring, concrete, and porous substrates.	Environmentally friendly, protects against stains, good chemical and abrasion resistance	Water-Based Urethane
FLOOR SCREED				
	abedur® S	High strength and abrasion-resistant screed.	Durable, high abrasion resistance.	Cementitious
	abescreed duraTop	Non-shrink overlay for smoothing and raising floors.	Fast track, durable, smoothing and raising.	
	abescreed SLCP 25	Rapid hardening screed for smoothing and leveling floors in refurbishment and new construction.	Fast setting, walkable in 6 hours, self-levelling, pumpable or hand-laid.	
INDUSTRIAL FLOOR SYSTEMS				
	Polyscreed MD	Heavy-duty, flow-applied, liquid flooring topping.	Antimicrobial, heat resistant, excellent abrasion resistance, solvent-free.	Polyurethane
	Polyscreed RT	Heavy duty polyurethane flooring.	Antimicrobial protection, easy to clean, non-slip matt finish, solvent-free application.	
	Solidflow SL 2000	Self-leveling epoxy floor system for concrete floors.	Seamless finish, easy to clean, excellent chemical and abrasion resistance, hard wearing, non-dusting, rapid installation.	Epoxy
FLOOR SEALERS				
	Solidkote 110	Wet-to-dry concrete bonding epoxy for concrete repairs and overlays.	High strength wet-to-dry concrete bonding.	Epoxy

CONCRETE WORKS			
PRODUCT	DESCRIPTION	FEATURES	TECHNOLOGY
CURING AGENTS			
duracure WB	Retain moisture in concrete for effective curing. Not to be overcoated.	Low viscosity. For concrete and off-shutter concrete. Dries clear.	Wax Emulsion
duracure PR	Multi-purpose curing, sealing & protective membrane, can be overcoated.	Clear: external concrete and plaster. White: external concrete structures.	Pliolite Resin Clear/White
duracure WPR	Resin based concrete curing compound with light reflectance to reduce surface temperature of concrete.	For concrete roads, concrete structures, external hardstands.	White Pigmented Petroleum Resin
duracure acrylic	Water based, slightly viscous acrylic bonding and curing agent, which dries clear.	Colourless, stain free, UV stable, curing aid and may be overcoated for concrete structures and repairs.	Acrylic Emulsion
STRUCTURAL GROUTING & ANCHORING			
duragrout® WF-H duragrout® WF-V	Ready-to-use, single component, shrinkage compensated flowable grout for grouting and bedding of structural concrete elements.	duragrout WF-Horizontal: horizontal grouting of cavities and joints. duragrout WF-Vertical: vertical grouting applications.	Cementitious
duragrout® HP	Structural non-shrink grout for application where high strength is required.	High performance precision grout. Ideal for grouting steel tower flanges.	
STRUCTURAL BONDING (PRECAST ELEMENTS)			
epidermix® 319	Bedding mortar/adhesive and patching honeycombed concrete surfaces.	High early strength, cures in damp conditions. For precast units, stair treads, joint arises, concrete.	Epoxy
epidermix® 318	Two component, solvent free, filled, polyamide cured epoxy for repairing and patching defects in concrete, fabricating components and fibre cement.	Non-toxic, excellent water resistance, resists certain solvents, non-slump and damp tolerant.	
RELEASING AGENTS			
durastrip	Shutter release agent.	Excellent release agent, economical.	Oil Emulsion
Techfin HP Shutter Release Oil	Shutter release agent for cast and tilt construction.	High performance.	
CONCRETE REPAIR & PROTECTION			
PRODUCT	DESCRIPTION	FEATURES	TECHNOLOGY
CORROSION PROTECTION			
durarep ZR primer	Steel reinforcing protection.	Zinc rich passivating coating.	Epoxy

BONDING AGENTS			
epidermix® 344	Concrete substrates, wet-to-dry adhesive.	Medium open time.	Epoxy
durabond-GP	General purpose bonding and curing agent.	Vertical, horizontal or overhead applications. Suitable for repairs in immersed conditions.	Acrylic
duralatex	Additive/bonding primer for cement mortars.	Improves adhesion, tensile and flexural strengths of sand/cement mixtures permitting thin layers.	Synthetic Resin Polymer
REPAIR MORTARS			
durarep FR	Structural reinstatement vertically or overhead and honeycomb repairs.	High strength, fibre reinforced, high build, migrating corrosion inhibitor (MCI).	Cementitious
durarep FS	Fast setting patching mortar for concrete and pavement structures.	High-early final compressive strength, self-compacting, chloride-free and non-shrink.	
durarep GT – MCI	Trowel or spray applied lightweight reinstatement mortar. For overhead applications.	High strength, dual expansion and migrating corrosion inhibitor.	
durarep P & S	Polymer modified, shrinkage compensated patching in concrete.	Fibre reinforced, chloride free, non-toxic, for applications 5 - 40 mm thick.	
FAIRING & REPROFILING			
durarep FC	Smoothing surface imperfections and blowholes.	Thin coat, high strength, feather edge.	Cementitious
Techfin Speedpatch	Cementitious rapid setting patching and skimming compound.	Rapid setting.	
PROTECTIVE COATINGS			
duraslurry	Concrete protection for sub-soil.	Cementitious, 1 part slurry to protect submerged concrete.	Cementitious
duraflex®	Waterproofing, protection and repair of new and old concrete structures internally and externally.	Flexible, non-toxic, excellent bond to concrete.	
durasil SH	Solvent based silane/siloxane water repellent for concrete surfaces.	Water repellent.	Silane-Siloxane
Mucis Mia 100	Migrating corrosion inhibitor protecting impregnation of pre-existing reinforced concrete structures.	Anodic & cathodic protection, normal & pre-compressed structures in heavy stressed conditions.	Water Based Acrylic
STRUCTURAL CRACK REPAIR			
epidermix® 395	Fast setting crack repairing liquid compound.	Low viscosity penetrating epoxy.	Epoxy
Techfin Crack Injection	High strength, pourable, low viscosity, solvent free epoxy resin based crack injection compound with chemical resistance.	Seals cracks, fills micro cavities and voids in concrete and stops water ingress. Tolerant of damp surfaces and resists hydrostatic pressure.	
Solidkote 345LV	Very low viscosity crack injection epoxy.	For crack widths of < 1 mm.	



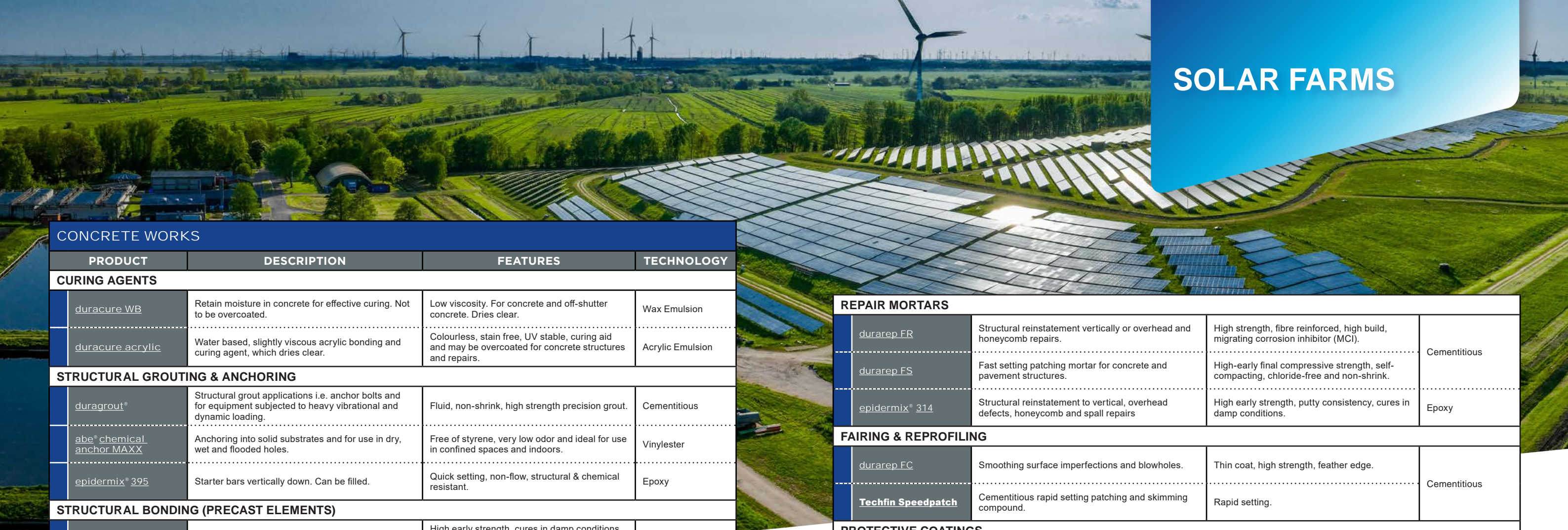
WIND FARMS

SEALANTS & ADHESIVES

PRODUCT	DESCRIPTION	FEATURES	TECHNOLOGY
PRIMERS			
epidermix® 326	Epoxy primer for porous surfaces.	Complete coverage, resists water immersion.	Epoxy
CONSTRUCTION SEALING			
Dowsil™ 813 C	Neutral silicone sealant for expansion and perimeter joints.	Weather-resistant, highly flexible, and provides strong adhesion for long-lasting sealing in varying conditions.	Silicone
EXPANSION AND CONTRACTION JOINTS			
flexothane® 27	Single component hybrid construction sealant, keystones.	Offers chemical resistance, for interior applications, ensuring durable sealing.	Polyurethane
HIGH MOVEMENT EXPANSION AND CONTRACTION JOINTS			
Dowsil™ 888	Silicone joint sealant for expansion joints.	Maintains flexibility, UV resistant, fuel resistant.	Silicone
WATERPROOFING			
PRODUCT	DESCRIPTION	FEATURES	TECHNOLOGY
CEMENTITIOUS			
duraflex®	Flexible slurry with synthetic resin, selected cements, and graded aggregate.	Water-resistant, dual side application with strong adhesion. Comprehensive structure protection.	Cementitious
duraslurry	Concrete, plaster and brick surfaces, dams, ponds, basements, sewage plants, supporting walls.	Cost effective waterproofing for new/old buildings. Dual side application. Ideal for various structures.	

FLOORING

PRODUCT	DESCRIPTION	FEATURES	TECHNOLOGY
PRIMERS & SURFACE TREATMENT			
Solidkote UP Epoxy Primer	Universal purpose high build clear epoxy primer for concrete floors.	Solvent-free, high bond strength, highly durable, chemical resistant, moisture tolerant, good low temperature cure.	Epoxy
Solidkote STP Primer	Solvent-free primer for low temperature cure.	High chemical resistance, solvent-free, damp tolerant.	
Polyscreed PU Primer	Cement primer forming a watertight moisture barrier.	Pore filling, antimicrobial, solvent-free, HACCP compliant.	Polyurethane
Solidkote SBP	Primer for performance resin systems, mainly for floor applications.	High chemical resistance, high abrasion and thermal shock resistance, fast curing.	Solvent Based Epoxy
Solidkote WB Clear	Clear topcoat and primer for concrete floors and walls.	Versatile sealer, damp tolerant, good colour stability, chemical and abrasion resistant, VOC compliant.	Water Based Epoxy
DRY SHAKE, FLOOR HARDENER & DENSIFIERS			
abecron LA	Natural, level assist, dustless surface hardener.	High abrasion resistance, dustless.	Cementitious
Pentra-Sil® (NL)	Lithium polysilicate densifier for concrete.	Improves hardness, abrasion resistance, and reduces dusting.	Silicate
Lisofloor 950	Hardener and sealer for new or old concrete surfaces.	Increases surface hardness, excellent abrasion resistance, waterproofing, VOC compliant.	
abe® Conseal	Concrete surface hardener.	Improves impermeability, excellent adhesion, and abrasion properties, resists water penetration.	
COATINGS			
Solidkote Robust	High build, pigmented topcoat for concrete flooring.	Durable, chemical-resistant, solvent-free, high build in one application.	Epoxy
Solidkote UVC	Aliphatic polyurethane coating for UV stable finish.	High gloss finish, high abrasion resistance, chemical resistant, easy to apply.	Polyurethane
Solidkote Ultra Tough	Hard wearing, polyaspartic coating with a high gloss finish.	Excellent chemical and abrasion resistance, UV stable, rapid curing.	Polyaspartic
SCREEDS & FLOOR REPAIRS			
abedur® S	High strength and abrasion-resistant screed.	Durable, high abrasion resistance.	Cementitious
abescreed duraTop	Non-shrink overlay for smoothing and raising floors.	Fast track, durable, smoothing and raising.	
Polyscreed MD	Heavy-duty, flow-applied, liquid flooring topping.	Antimicrobial, heat resistant, excellent abrasion resistance, solvent-free.	Polyurethane
Polyscreed RT	Heavy duty polyurethane flooring.	Antimicrobial protection, easy to clean, non-slip matt finish, solvent-free application.	
Solidflow SL 2000	Self-leveling epoxy floor system for concrete floors.	Seamless finish, easy to clean, excellent chemical and abrasion resistance, hard wearing, non-dusting, rapid installation.	Epoxy



SOLAR FARMS

CONCRETE WORKS

PRODUCT	DESCRIPTION	FEATURES	TECHNOLOGY
---------	-------------	----------	------------

CURING AGENTS

duracure WB	Retain moisture in concrete for effective curing. Not to be overcoated.	Low viscosity. For concrete and off-shutter concrete. Dries clear.	Wax Emulsion
duracure acrylic	Water based, slightly viscous acrylic bonding and curing agent, which dries clear.	Colourless, stain free, UV stable, curing aid and may be overcoated for concrete structures and repairs.	Acrylic Emulsion

STRUCTURAL GROUTING & ANCHORING

duragrout®	Structural grout applications i.e. anchor bolts and for equipment subjected to heavy vibrational and dynamic loading.	Fluid, non-shrink, high strength precision grout.	Cementitious
abe® chemical anchor MAXX	Anchoring into solid substrates and for use in dry, wet and flooded holes.	Free of styrene, very low odor and ideal for use in confined spaces and indoors.	Vinylester
epidermix® 395	Starter bars vertically down. Can be filled.	Quick setting, non-flow, structural & chemical resistant.	Epoxy

STRUCTURAL BONDING (PRECAST ELEMENTS)

epidermix® 319	Bedding mortar/adhesive and patching honeycombed concrete surfaces.	High early strength, cures in damp conditions. For precast units, stair treads, joint arises, concrete.	Epoxy
epidermix® 350	Structural bonding dry-to-dry concrete, steel and various metal components.	High strength, non-slump, non-shrink. Polysulphide modified.	
Solidbond 117	High-strength epoxy adhesive.	Rapid setting, high bond strength, durable.	
epidermix® 318	Two component, solvent free, filled, polyamide cured epoxy for repairing and patching defects in concrete, fabricating components and fibre cement.	Non-toxic, excellent water resistance, resists certain solvents, non-slump and damp tolerant.	

RELEASING AGENTS

durastrip	Shutter release agent.	Excellent release agent, economical.	Oil Emulsion
Techfin HP Shutter Release Oil	Shutter release agent for cast and tilt construction.	High performance.	

CONCRETE REPAIR & PROTECTION

PRODUCT	DESCRIPTION	FEATURES	TECHNOLOGY
---------	-------------	----------	------------

CORROSION PROTECTION

durarep ZR primer	Steel reinforcing protection.	Zinc rich passivating coating.	Epoxy
durabond SP	One component slurry primer with active corrosion inhibitors, used for the protection of reinforced steel with excellent adhesion to concrete.	Elastomeric, crack bridging, UV stable, also a bonding slurry. Resistant to water and chloride penetration.	Cementitious

BONDING AGENTS

epidermix® 344	Concrete substrates, wet-to-dry adhesive.	Medium open time.	Epoxy
durabond-GP	General purpose bonding and curing agent.	Vertical, horizontal or overhead applications. Suitable for repairs in immersed conditions.	Acrylic
duralatex	Additive/bonding primer for cement mortars.	Improves adhesion, tensile and flexural strengths of sand/cement mixtures permitting thin layers.	Synthetic Resin Polymer

REPAIR MORTARS

durarep FR	Structural reinstatement vertically or overhead and honeycomb repairs.	High strength, fibre reinforced, high build, migrating corrosion inhibitor (MCI).	Cementitious
durarep FS	Fast setting patching mortar for concrete and pavement structures.	High-early final compressive strength, self-compacting, chloride-free and non-shrink.	
epidermix® 314	Structural reinstatement to vertical, overhead defects, honeycomb and spall repairs	High early strength, putty consistency, cures in damp conditions.	Epoxy

FAIRING & REPROFILING

durarep FC	Smoothing surface imperfections and blowholes.	Thin coat, high strength, feather edge.	Cementitious
Techfin Speedpatch	Cementitious rapid setting patching and skimming compound.	Rapid setting.	

PROTECTIVE COATINGS

duracote WB	Carbonation (inland), chloride (coastal) and other water borne contaminants barrier.	Coloured, UV stable, flexible system, primer and top coat.	Acrylic
durasil SH	Solvent based silane/siloxane water repellent for concrete surfaces.	Water repellent.	Silane-Siloxane
Hydroseal WB	Water based silane/siloxane water repellent for concrete surfaces.		
duraslurry	Concrete protection for sub-soil.	Cementitious, 1 part slurry to protect submerged concrete.	Cementitious

STRUCTURAL CRACK REPAIR

epidermix® 395	Fast setting crack repairing liquid compound.	Low viscosity penetrating epoxy.	Epoxy
Techfin Crack Injection	High strength, pourable, low viscosity, solvent free epoxy resin based crack injection compound with chemical resistance.	Seals cracks, fills micro cavities and voids in concrete and stops water ingress. Tolerant of damp surfaces and resists hydrostatic pressure.	
Solidkote 345LV	Very low viscosity crack injection epoxy.	For crack widths of < 1 mm.	

STEEL PROTECTION

PRIMERS

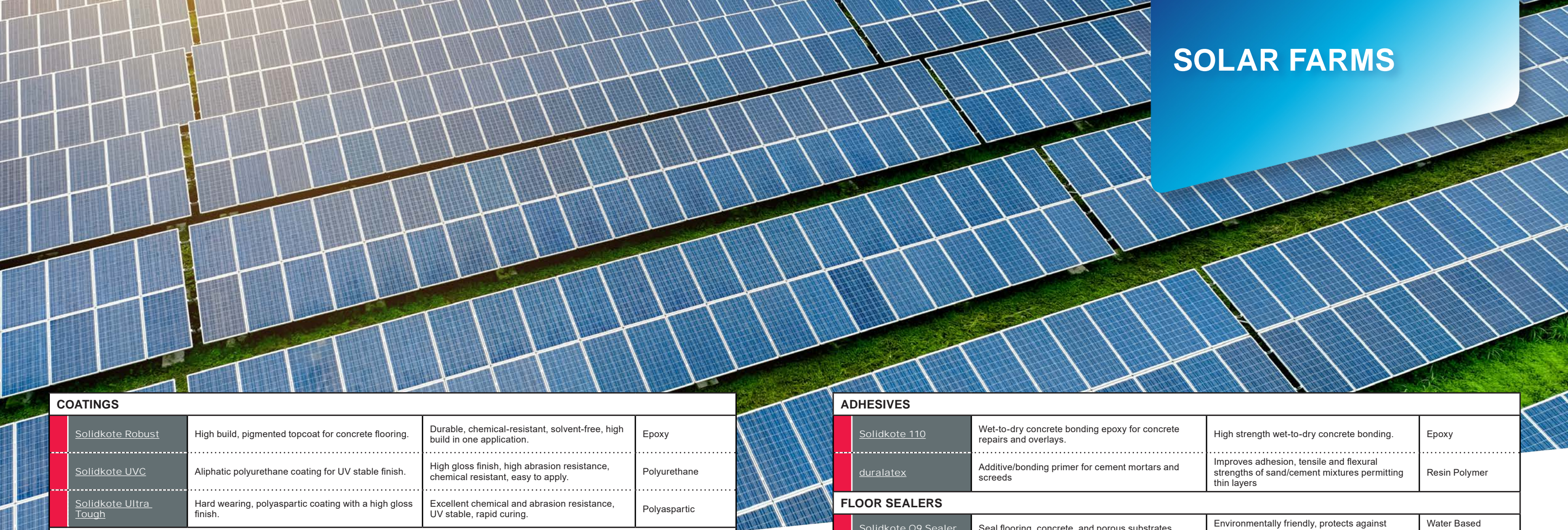
4-metal	Corrosion inhibitor coating i.e. mounting structures.	4-in-1 system: direct to metal, direct to rust, primer and top coat.	Acrylic
Solidguard 366 Metal Primer	Zinc Phosphate epoxy steel coating with corrosion inhibitors.	Can be overcoated with solvent-less epoxy or solvent based systems with damp tolerance and cures < 5 °C.	Epoxy

CORROSION PROTECTION

Solidguard 88	Multi-purpose, epoxy self-priming metal coating for corrosion protection.	Excellent adhesion to steel, low temperature cure and crack resistant.	Epoxy
Solidkote UVC	Steel protection polyurethane coating.	Chemical, UV and abrasion resistant.	Polyurethane

SEALANTS & ADHESIVES			
PRODUCT	DESCRIPTION	FEATURES	TECHNOLOGY
PRIMERS			
epidermix® 326	Epoxy primer for porous surfaces.	Complete coverage, resists water immersion.	Epoxy
HIGH MOVEMENT EXPANSION AND CONTRACTION JOINTS			
Dowsil™ 888	Silicone joint sealant for expansion joints.	Maintains flexibility, UV resistant, fuel resistant.	Silicone
WATERPROOFING			
PRODUCT	DESCRIPTION	FEATURES	TECHNOLOGY
PRIMERS			
abeproof liquid membrane primer	Solvent borne, liquid primer applied to most building substrates.	Excellent surface conditioner, durable, quick drying, moisture insensitive.	Solvent Based
abeproof acrylic water based membrane primer	Water based acrylic primer, sealer and bonding agent for the abeproof liquid acrylic systems.	Easy to apply. Water based and non-toxic. Excellent bonding capability.	Water Based
CEMENTITIOUS			
duraflex®	Flexible slurry with synthetic resin, selected cements, and graded aggregate.	Water-resistant, dual side application with strong adhesion. Comprehensive structure protection.	Cementitious
duraslurry	Concrete, plaster and brick surfaces, dams, ponds, basements, sewage plants, supporting walls.	Cost effective waterproofing for new/old buildings. Dual side application. Ideal for various structures.	
duraproof krystalkote	Cementitious waterproofing system by crystallization.	Easy-to-apply, single-component. Positive and negative waterproofing for concrete. Protects against rising dampness.	
LIQUID APPLIED MEMBRANES			
Mariseal® 250	Liquid-applied polyurethane waterproofing membrane.	Liquid applied polyurethane membrane. Resistant to water, frost and root penetration.	Polyurethane
Mariseal® 400	Aliphatic polyurethane top coat, UV stable, for light pedestrian traffic areas.	Roller or spray apply. Enhances abrasion and wear resistance. UV and colour stable. Suitable for light foot traffic	
Mariseal® 460	Aliphatic waterproofing UV stable Membrane for roofs	UV stable, fast curing. Suitable for light pedestrian traffic. Seamless and easy local repairs.	
Mariseal® 420	Aliphatic polyurethane top coat, UV stable, for public, pedestrian & vehicular traffic areas.	Easy roller or spray applied. Durable against heavy abrasion. UV stable. Suitable for heavy traffic.	
Mariseal® 670	Solvent based, one-component, bitumen-modified polyurethane membrane for durable waterproofing.	Easy application for foundations and retaining walls, seamless and joint free. Root penetration & chemical resistance.	

LIQUID APPLIED MEMBRANES				
	super laycryn®	High quality flexible bitumen acrylic emulsion that is a highly flexible.	All-in-one system. Excellent weathering, adhesion, tough, flexible, non-toxic. Available in many colours.	Bitumen Acrylic
	super laykold®	Rubberized bitumen emulsion.	Integrated system, strong adhesion to foundations. Durable and flexible for various conditions.	Bitumen
	silvakote®	Reflective bitumen based aluminium paint.	Reflective aluminum paint for various surfaces. UV resistant. Highly reflective. Easy to apply.	
	bituseal plastic	General purpose hydrocarbon solvent-borne, asbestos-free, reinforced bituminous heavy duty mastic sealer.	Economical waterproofing compound. Easy to apply. May be over-coated.	
	abeproof liquid membrane	Single pack solvent borne, highly elastic rubberized, durable, low maintenance liquid membrane for waterproofing.	Seamless. Superior water resistance. High elasticity and durability. Fast curing. Moisture insensitive. UV stable.	Solvent
	abeproof PU ECO	High performance eco friendly PU liquid applied waterproofing membrane.	Environmentally friendly, high elongation and UV resistant. Fast drying and suitable for confined areas.	Polyurethane
FLOORING				
PRODUCT		DESCRIPTION	FEATURES	TECHNOLOGY
PRIMERS & SURFACE TREATMENT				
	Solidkote UP Epoxy Primer	Universal purpose high build clear epoxy primer for concrete floors.	Solvent-free, high bond strength, highly durable, chemical resistant, moisture tolerant, good low temperature cure.	Epoxy
	Solidkote STP Primer	Solvent-free primer for low temperature cure.	High chemical resistance, solvent-free, damp tolerant.	
	Polyscreed PU Primer	Cement primer forming a watertight moisture barrier.	Pore filling, antimicrobial, solvent-free, HACCP compliant.	Polyurethane
	Solidkote SBP	Primer for performance resin systems, mainly for floor applications.	High chemical resistance, high abrasion and thermal shock resistance, fast curing.	Solvent Based Epoxy
	Solidkote WB Clear	Clear topcoat and primer for concrete floors and walls.	Versatile sealer, damp tolerant, good colour stability, chemical and abrasion resistant, VOC compliant.	Water Based Epoxy
DRY SHAKE, FLOOR HARDENER & DENSIFIERS				
	abecron LA	Natural, level assist, dustless surface hardener.	High abrasion resistance, dustless.	Cementitious
	Pentra-Sil® (NL)	Lithium polysilicate densifier for concrete.	Improves hardness, abrasion resistance, and reduces dusting.	Silicate
	Lisofloor 950	Hardener and sealer for new or old concrete surfaces.	Increases surface hardness, excellent abrasion resistance, waterproofing, VOC compliant.	
	abe® Conseal	Concrete surface hardener.	Improves impermeability, excellent adhesion, and abrasion properties, resists water penetration.	



SOLAR FARMS

COATINGS			
	Solidkote Robust	High build, pigmented topcoat for concrete flooring.	Durable, chemical-resistant, solvent-free, high build in one application.
	Solidkote UVC	Aliphatic polyurethane coating for UV stable finish.	High gloss finish, high abrasion resistance, chemical resistant, easy to apply.
	Solidkote Ultra Tough	Hard wearing, polyaspartic coating with a high gloss finish.	Excellent chemical and abrasion resistance, UV stable, rapid curing.
SCREEDS & FLOOR REPAIRS			
	abedur® S	High strength and abrasion-resistant screed.	Durable, high abrasion resistance.
	abescreed duraTop	Non-shrink overlay for smoothing and raising floors.	Fast track, durable, smoothing and raising.
	Polyscreed MD	Heavy-duty, flow-applied, liquid flooring topping.	Antimicrobial, heat resistant, excellent abrasion resistance, solvent-free.
	Polyscreed RT	Heavy duty polyurethane flooring.	Antimicrobial protection, easy to clean, non-slip matt finish, solvent-free application.
	Solidflow SL 2000	Self-leveling epoxy floor system for concrete floors.	Seamless finish, easy to clean, excellent chemical and abrasion resistance, hard wearing, non-dusting, rapid installation.

ADHESIVES			
	Solidkote 110	Wet-to-dry concrete bonding epoxy for concrete repairs and overlays.	High strength wet-to-dry concrete bonding.
	duralatex	Additive/bonding primer for cement mortars and screeds	Improves adhesion, tensile and flexural strengths of sand/cement mixtures permitting thin layers
FLOOR SEALERS			
	Solidkote Q9 Sealer	Seal flooring, concrete, and porous substrates.	Environmentally friendly, protects against stains, good chemical and abrasion resistance.



za.weber
0860 272 829



SAINT-GOBAIN

abe.co.za
0860 223 773



<https://www.abe.co.za/maris-waterproofing-protecting-systems/>
0860 223 773



technicalfinishes.com
011 822 7242

ENERGY INFRASTRUCTURE SOLUTIONS

